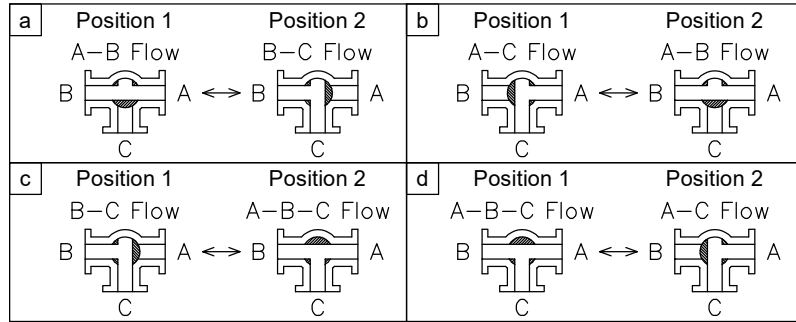
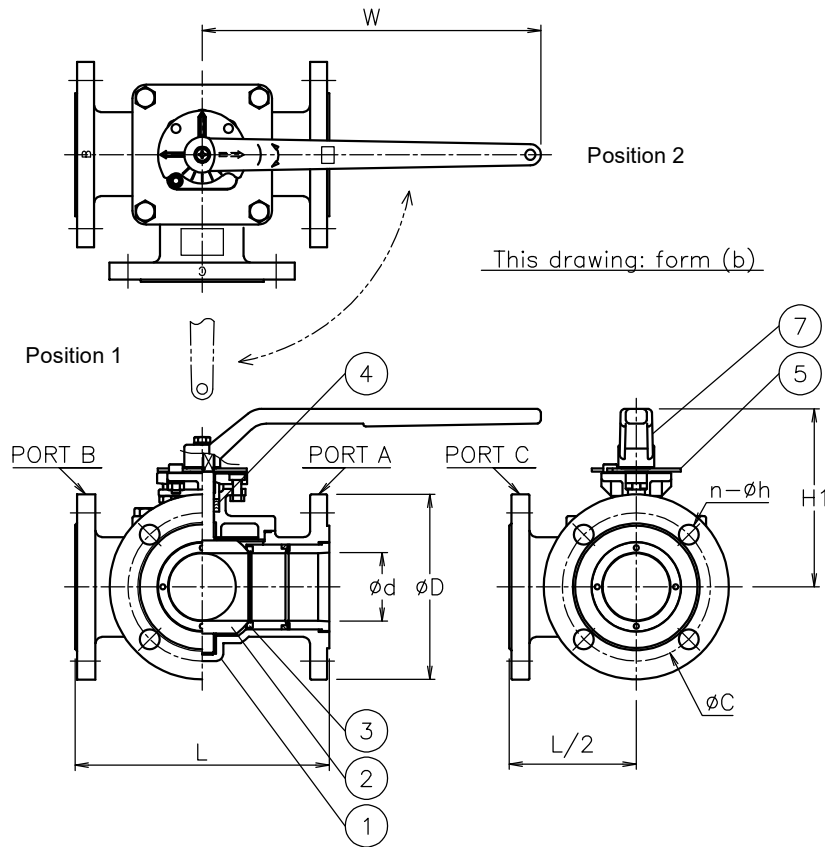


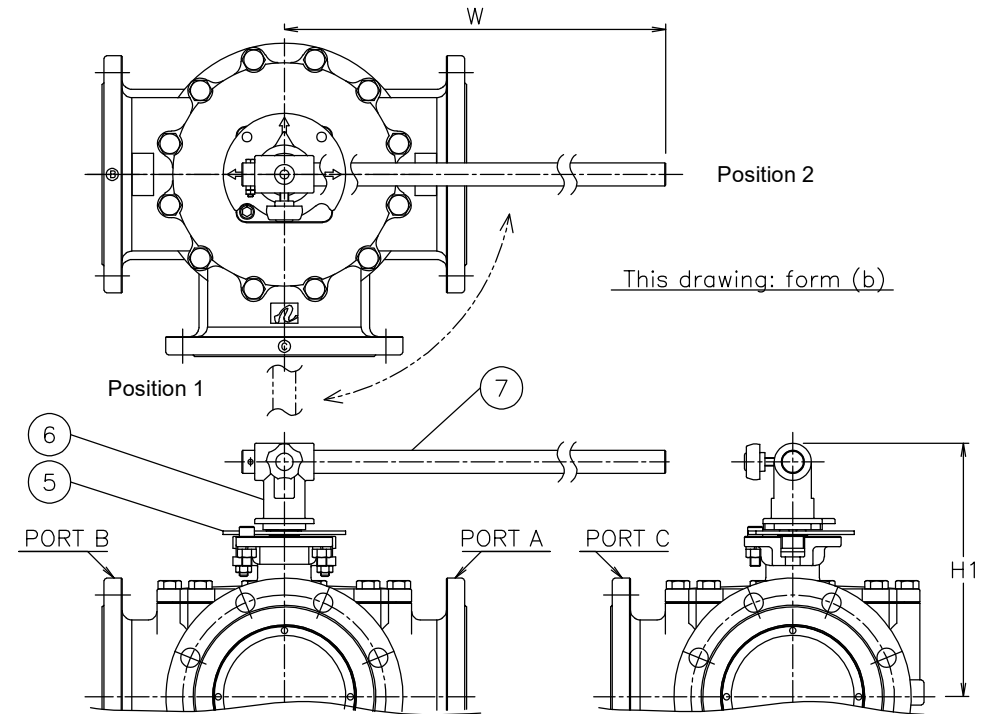
Flow paths and option code (Top views of valve)



This valve has 4 flow paths a, b, c, and d. Specify the flow path with the option code.



Size [mm]	d	L	D	C	n-h	W	H1	Weight [kg]	Cv		Actuator
									L flow	Straight flow	
25	25	160	125	90	4-19	145	115	6.4	26	45	Lever
40	40	180	140	105	4-19	220	146	9.6	65	129	Lever
50	51	200	155	120	4-19	320	159	15	110	219	Lever
65	65	240	175	140	4-19	320	169	21	160	300	Lever
80	76	260	185	150	8-19	430	193	28	260	469	Lever
100	100	330	210	175	8-19	430	206	38	480	820	Lever
125	122	370	250	210	8-23	400 to 750	280	58	770	1400	Lever
150	145	430	280	240	8-23	400 to 750	299	80	1150	2000	Lever



NOTE  
(a) Lever handle is removed and shipped.

No	DESCRIPTION	MATERIALS	REQ'D	REMARKS
7	Lever handle	SCS13A/SUS304	1	(a)
6	Joint	SCS13A	1	
5	Position indicator	SUS304	1	
4	Packing	PTFE	1	
3	Seat	R-PTFE	3	
2	Ball-Stem	SCS13A	1	
1	Body	SCS13A	1	

MARK	DATE	BY	DATE	'21-08-12	SCALE	NON	DWG No.	T3-1TTG-L-MA5-EN	
REVISIONS									
MV-2920									
					APPR'D	H.F	TITLE		
					CHK'D	K.Y	J10K Flanged-end		
					DESIGN		T3 type 3 way ball valve		
					DRAWN	S.O	MODEL		
					MAXT3L-1TTG				