

## CM2 type Electric Actuator Specifications

### FEATURE

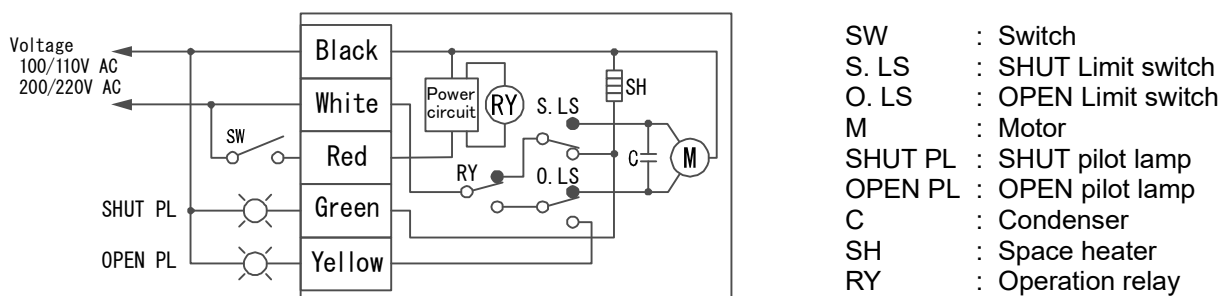
A lightweight and economical electric actuator for AC power supply.

### SPECIFICATION

Actuator type (□:Voltage code)	CM2-030-□	CM2-070-□
Voltage	100 / 110 V AC $\pm 10\%$ 50/60 Hz (Code: 1) 200 / 220 V AC $\pm 10\%$ 50/60 Hz (Code: 2)	
Rated torque [N·m]	3	7
Operation time [s]	14.5 / 12 (50/60 Hz)	17 / 14 (50/60 Hz)
Power consumption [VA]	7	13
Motor	Synchronous motor	
Overload protection	Impedance protect	
Method of operation	a-contact input type, with built-in relay	
Operation	SW is OFF $\rightarrow$ SHUT (SHUT PL is lit.) SW is ON $\rightarrow$ OPEN (OPEN PL is lit.)	
Input signal current	16 mA	
Output signal rating	Resistance load 0.5 A 120 V AC / 0.2 A 250 V AC	
	Micro load 2 mA	Micro load 8 mA
Duty cycle	50 % 30 min	
Ambient temperature	-20 to 50 °C	
Space heater	0.3 W	
Manual operation	Direct operation	Direct operation (with clutch button)
Enclosure	Equivalent to IP65 (IEC 60529)	
Housing material	Polycarbonate resin (Brack)	
Conduct port	Flexible cable 5 leads 0.5 mm <sup>2</sup> L=500 mm	

3 way valve: SHUT / Position①, OPEN / Position②.

### WIRING



Flexible cable of the actuator has 5 lead wires colored in Black, White, Red, Green, and Yellow. Check that power supply voltage is correct and connect wires as shown in the wiring diagram.

- Note)
- Two or more actuators can be operated with one control switch.
  - When using control switch with current leakage (more than 1 mA) such as TRIAC or relay with CR, it can cause malfunction.
  - For manual operation on CM2-070, press the clutch button while operating it.