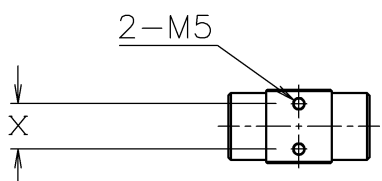
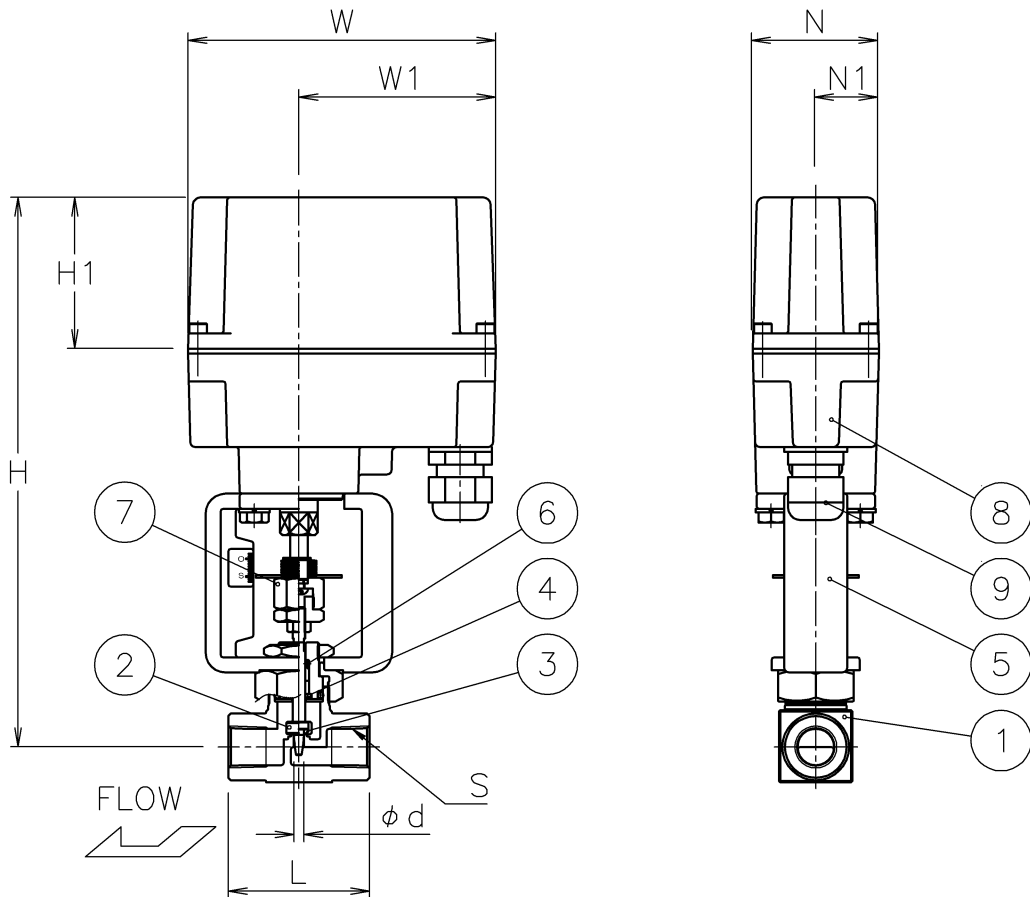



Valve DN	S	d	L	H1	W	W1	N	N1	H	X	Weight (kg)	Cv	Characteristics	Actuator	Sizing code	
10 A	Rc 3/8	4	56	60	122	78	50	25	218	18	1.6	0.05(S)	Linear	LAX-030	0	
				65	130	94	70	35	256			0.13(M)				
		6.5									2.4	0.34(L)			LAX-070	
15 A	Rc 1/2	4	56	60	122	78	50	25	218	18	1.6	0.05(S)	Linear	LAX-030	0	
				65	130	94	70	35	256			0.13(M)				
		6.5										2.4		0.34(L)		LAX-070
		9.5											0.8(H)			
													2.0(X)	EQ%		
												2.0(XE)				



9	Cable gland	NYLON 6	1	G 3/8 (a)
8	Actuator	Aluminum alloy die-cast cover	1	
7	Seal-spring	SUS304	1	
6	O-ring	FKM	2	
5	Bracket	SCS13A	1	
4	Packing	F-PTFE	1	
3	Seat	F-PTFE	1	
2	Trim	SUS316	1	
1	Body	SCS14A	1	
No	DESCRIPTION	MATERIALS	REQ'D	REMARKS

NOTE
(a) Cable ground (φ5 to 10.5 cable)

			APPR'D	H.F	TITLE	Threaded End Rc Valve DN: 10~15 A					
			CHK'D	K.Y		NS type electric needle valve					
			DESIGN		MODEL	LAXNS*05UUF*					
			DRAWN	P.O							
MARK	DATE	BY	DATE	'14-10-28	SCALE	NON	DWG No.	NS-*5UUF-LA2-E			
REVISIONS			 NIPPON VALVE CONTROLS, INC.								
MV-2424											