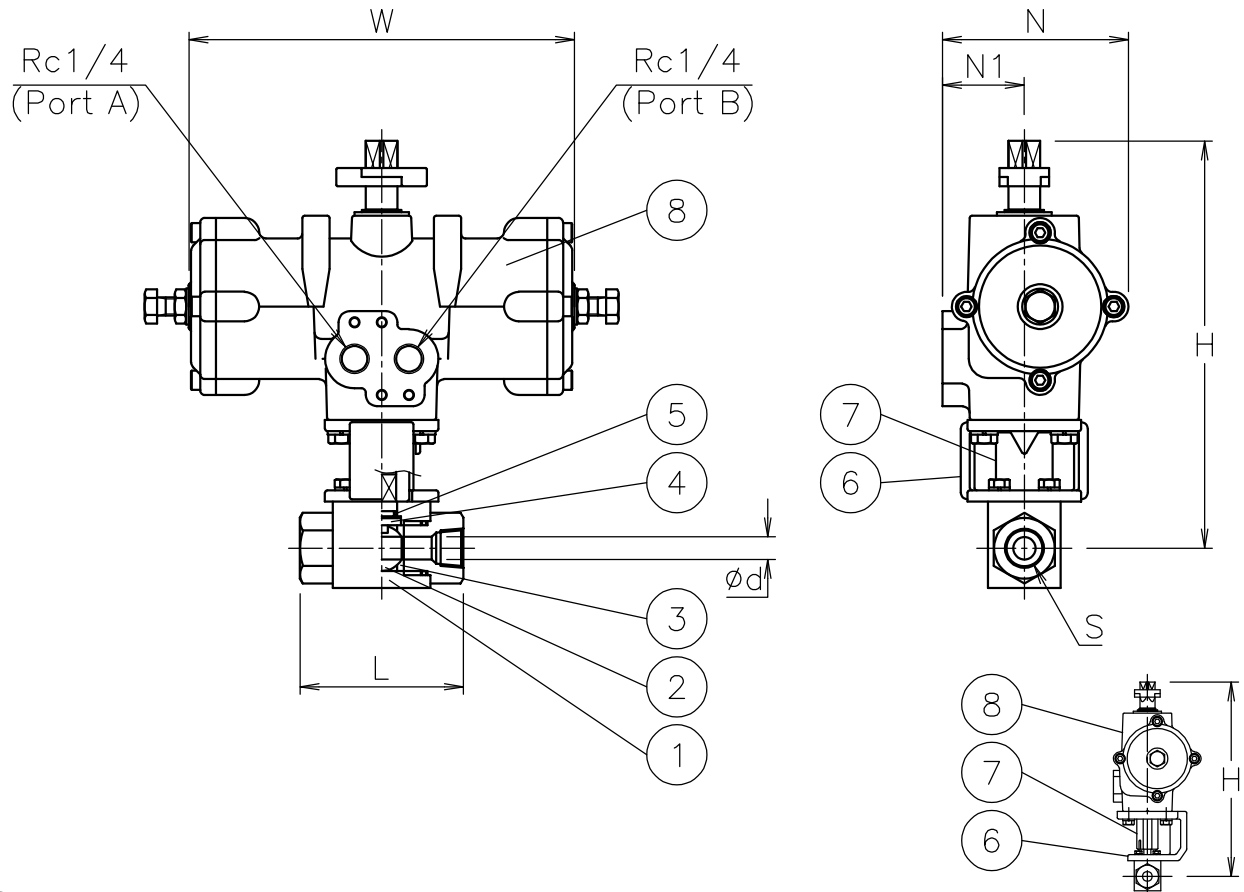


Size [mm]	S	d	L	W	N	N1	H	Weight [kg]	Acatuator	Sizing code
8	Rc 1/4	10	72	170	82	36	180	2.2	TAD-050	0
				204	95	38	195	3	TAD-063	2
10	Rc 3/8	10	72	170	82	36	180	2.2	TAD-050	1
				204	95	38	195	3	TAD-063	0
15	Rc 1/2	13	83	204	95	38	195	3.1	TAD-063	0
				240	116	45	257	5.1	TAD-080	2
20	Rc 3/4	20	95	204	95	38	207	3.9	TAD-063	1
				240	116	45	248	5.4	TAD-080	0
25	Rc 1	25	113	240	116	45	252	6.2	TAD-080	0
				294	143	57	283	8.9	TAD-100	2



TADH-925UUD-015

**NOTE**

- 1) Air supply: 0.4 to 0.5 Mpa. Max 0.7 Mpa.
- 2) Actuator operation  
 Air to port A: SHUT  
 Air to port B: OPEN

Size [mm]	Working pressure
8 to 15	31.5 MPa
20	30 MPa
25	25 MPa

8	Actuator		1	TAD
7	Joint	SUS304/SCS13A	1	
6	Bracket	SCS13A/SPHCP	1	
5	O-ring	FKM	1	
4	Stem	SUS316Ti	1	
3	Seat	POM-SL	2	
2	Ball	SUS316Ti	1	Cr plated
1	Body	SUS316Ti	1	
No	DESCRIPTION	MATERIALS	REQ'D	REMARKS

			APPR'D	H.F	TITLE	Threaded End Rc (double-acting type) H type high pressure pneumatic actuated ball valve					
			CHK'D	K.Y							
			DESIGN		MODEL	TADH-9*5UUD					
			DRAWN	S.O							
MARK	DATE	BY	DATE	'22-05-26	SCALE	NON	DWG No.	H-9*5UUD-TA8-EN			
REVISIONS											
MV-2965											