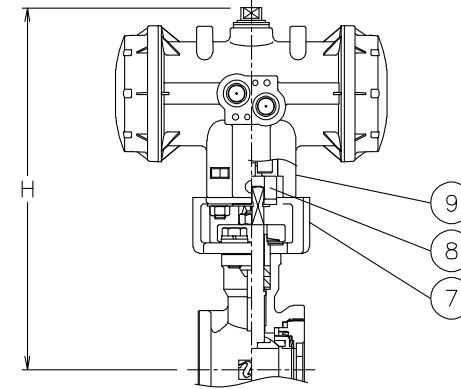
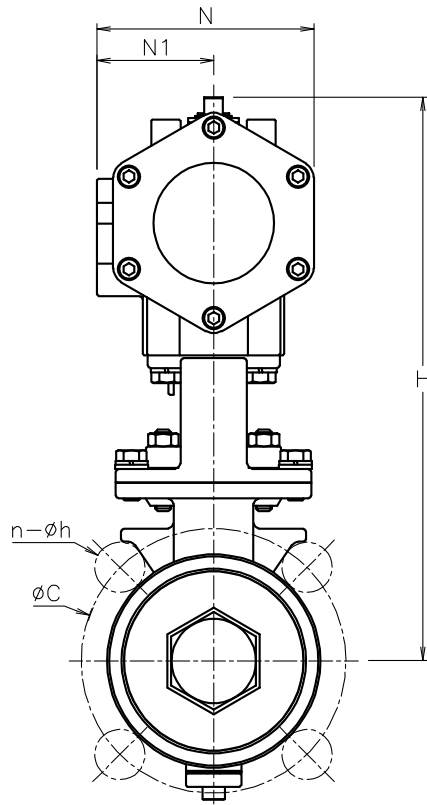
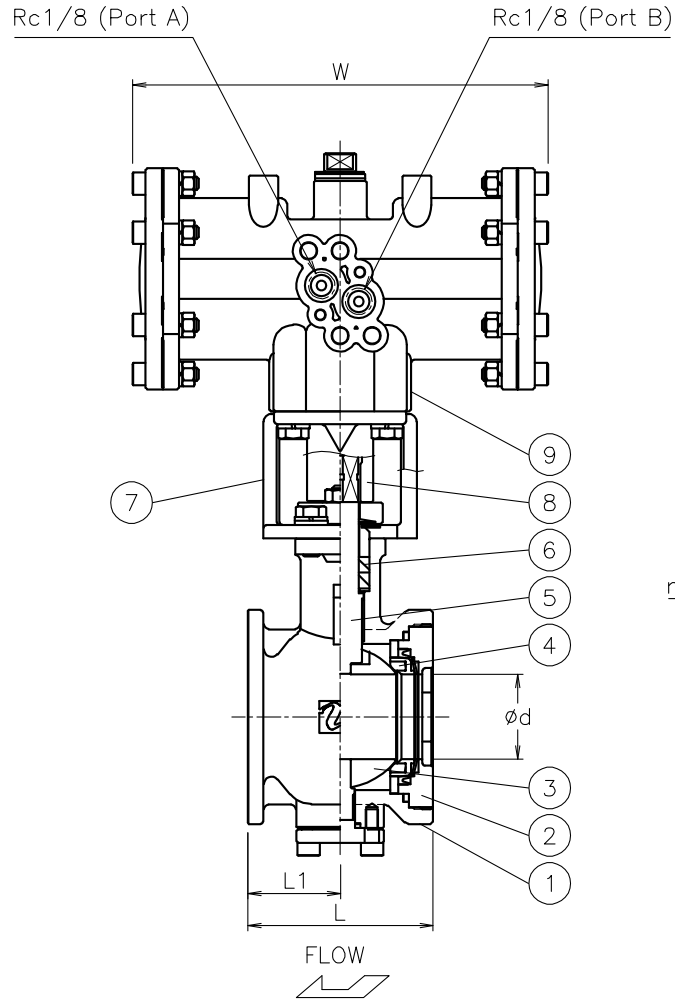


NOTE

- 1) Air supply: 0.4 to 0.5 Mpa. Max 0.7 Mpa.
- 2) Actuator operation
Air to port A: SHUT
Air to port B: OPEN
- (a) Coupling OD must be less than 14.5 mm.

Size [mm]	d	L	L1	J10K		J20K		W	N	N1	H	Weight [kg]	Cv	Actuator	Sizing code
				C	n-h	C	n-h								
15	15	40	20	70	4-15	70	4-15	108	57	30	153	1.2	20	PND-03D	0
								128	68	36	169	1.6		PND-04D	2
20	20	50	25	75	4-15	75	4-15	108	57	30	155	1.4	36	PND-03D	0
								128	68	36	171	1.8		PND-04D	2
25	25	60	30	90	4-19	90	4-19	128	68	36	180	2.3	50	PND-04D	0
								157	82	44	210	2.5		PND-05D	2
32	32	70	35	100	4-19	100	4-19	128	68	36	184	2.7	90	PND-04D	0
								157	82	44	213	3		PND-05D	2
40	40	80	40	105	4-19	105	4-19	157	82	44	237	4	120	PND-05D	0
50	50	95	45	120	4-19	120	8-19	157	82	44	245	5.4	220	PND-05D	0



PNDGS9*3UUG-015
PNDGS9*3UUG-020
PNDGS903UUG-025
PNDGS903UUG-032

No	DESCRIPTION	MATERIALS	REQ'D	REMARKS
9	Actuator	PPS body	1	PND (a)
8	Joint	SUS304	1	
7	Bracket	SCS13A	1	
6	Packing	R-PTFE	2	
5	Stem	SUS316	1	
4	Seat	R-PTFE	1	
3	Ball	SCS14A	1	HCr PLTD
2	Cap	SCS14A	1	
1	Body	SCS14A	1	

MARK	DATE	BY	DATE	SCALE	NON	DWG No.	GS-9*3UUG-NA1-EN

REVISIONS
MV-2987