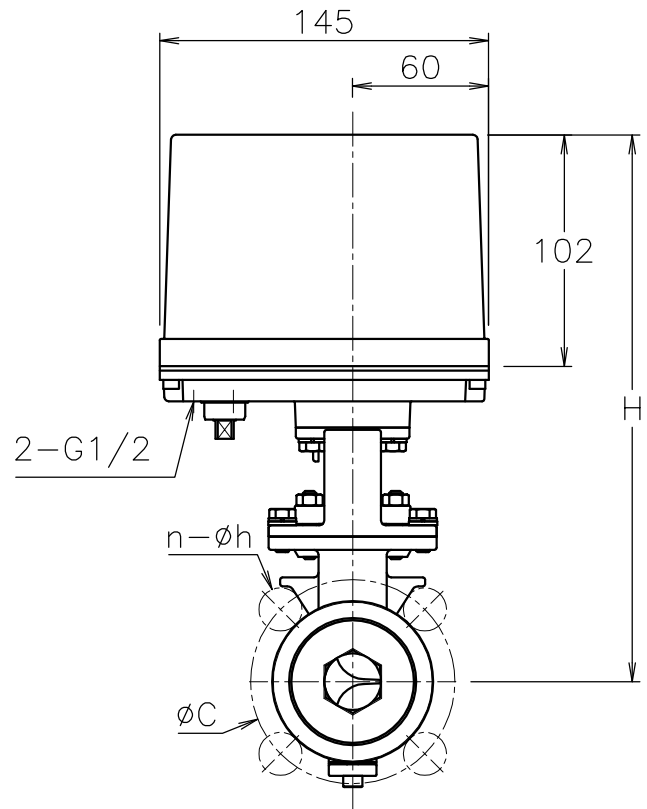
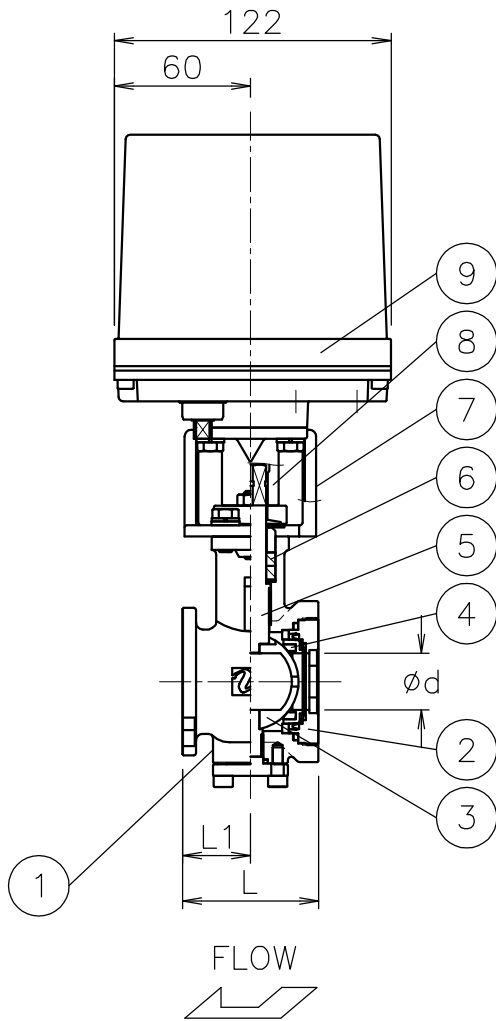


Size [mm]	d	L	L1	J10K		J20K		H	Weight [kg]	Cv	Actuator	Sizing code
				C	n-h	C	n-h					
V15	(15)	40	20	70	4-15	70	4-15	230	3.2	4	AEX-120	0
									3.6		AEX-360	2
V20	(20)	50	25	75	4-15	75	4-15	232	3.4	8	AEX-120	0
									3.8		AEX-360	2
V25	(25)	60	30	90	4-19	90	4-19	241	3.9	9	AEX-120	0
									4.3		AEX-360	2
V32	(32)	70	35	100	4-19	100	4-19	245	4.3	22	AEX-120	0
									4.7		AEX-360	2



NOTE
ATTACHMENT
Cable gland (nylon), G 1/2, for 6φ to 12φ cable.
Plug.

9	Actuator	Aluminum alloy diecast cover	1	
8	Joint	SUS304	1	
7	Bracket	SCS13A	1	
6	Packing	R-PTFE	2	
5	Stem	SUS316	1	
4	Seat	R-PTFE	1	
3	Ball	SCS14A	1	HCr PLTD
2	Cap	SCS14A	1	
1	Body	SCS14A	1	
No	DESCRIPTION	MATERIALS	REQ'D	REMARKS

			APPR'D	H.F	TITLE	J10K/20K Flanged-end (Wafer type) GS type electric actuated control valve				
			CHK'D	K.Y						
			DESIGN		MODEL	AEXGS**3UUGV				
			DRAWN	S.O						
MARK	DATE	BY	DATE	'17-02-28	SCALE	NON	DWG No.	GS-*3UUG-V-EX5-EN		
REVISIONS			 NIPPON VALVE CONTROLS, INC.							
MV-2590										