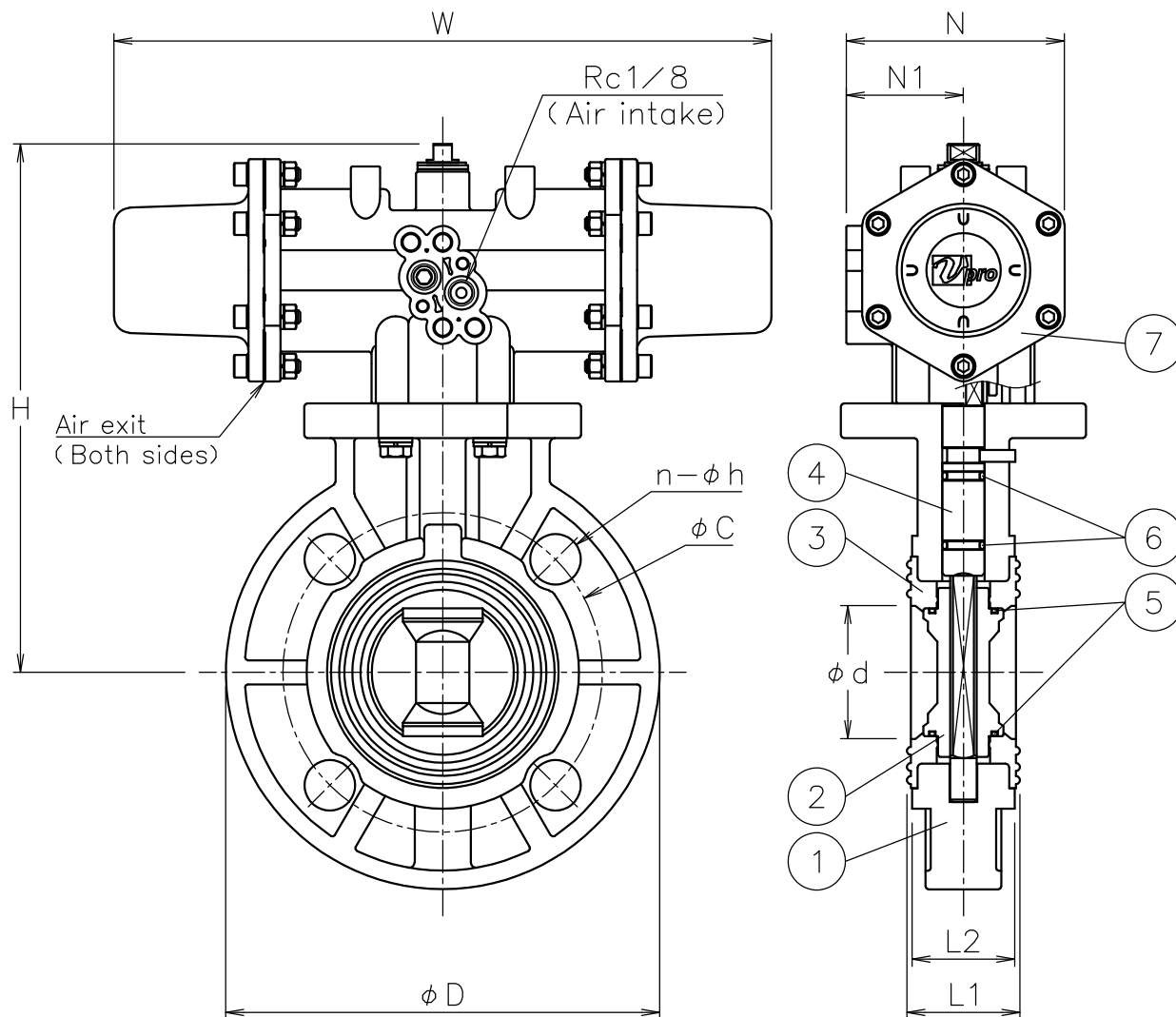



Valve DN	d	L1	L2	D	C	n-h	W	N	N1	H	Weight (kg)	Cv	Actuator		Sizing code
40 A	50	38.5	35.5	146	105	4-19	247	82	44	192	1.6	75	PSO-05D	PSC-05D	0
50 A	57	42.5	38.5	163	120	4-19	247	82	44	199	1.9	123	PSO-05D	PSC-05D	0
65 A	70	46	44	182	140	4-19	288	95	48	209	2.7	267	PSO-05W	PSC-05W	0
80 A	80	46	43.5	198	150	8-19	288	95	48	212	2.8	368	PSO-05W	PSC-05W	0



NOTE

- Air supply : 0.4~0.5 Mpa max 0.7 Mpa
- Actuator operation
 - PSO serie
 - Air to intake port : OPEN
 - Spring return : SHUT
 - PSC serie
 - Air to intake port : SHUT
 - Spring return : OPEN
- Coupling OD must be less than $\phi 14.5$

No	DESCRIPTION	MATERIALS	REQ'D	REMARKS
7	Actuator	PPS body	1	PSO/C
6	O-ring	EPDM	2	
5	O-ring	EPDM	2	
4	Stem	SUS410	1	
3	Seat	EPDM	1	
2	Disc	PP	1	
1	Body	PP	1	

					Valve DN: 40~80 A						
		APPR'D		H.F	TITLE	J10K Flanged-end (Wafer type)(single-acting type) FP type pneumatic actuated butterfly valve					
		CHK'D		K.Y							
		DESIGN									
		DRAWN		P.O	MODEL	PSOFP901QQE		PSCFP901QQE			
MARK	DATE	BY	DATE	'16-10-07	SCALE	NON	DWG No.	FP-901QQE-PD2-EN			
REVISIONS					 NIPPON VALVE CONTROLS, INC.						
MV-2546											