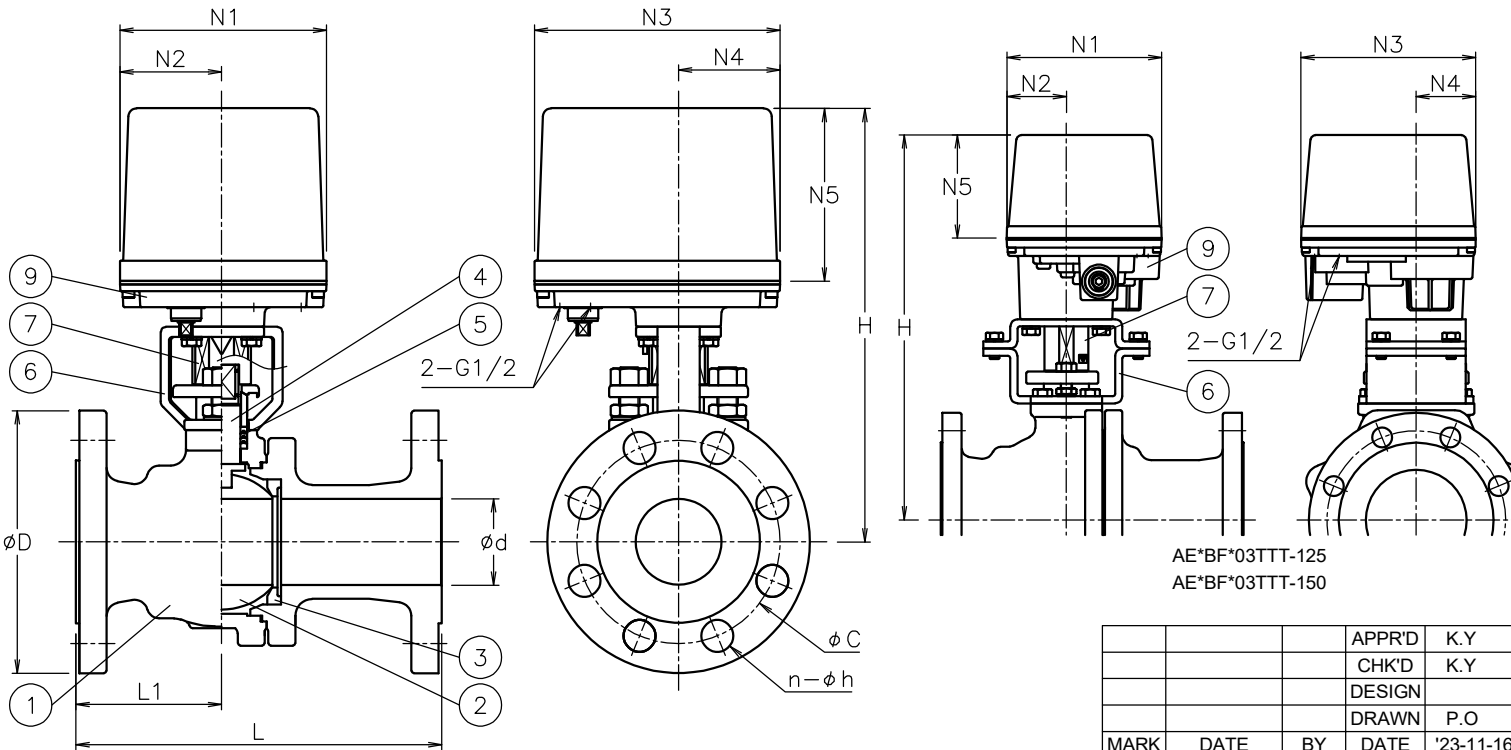


AE*BF*13TTT-125

AE*BF*23TTT-065
AE*BF*03TTT-080
AE*BF*03TTT-100

AE*BF*03TTT-065
AE*BF*13TTT-080

Size (mm)	d	L	L1	D	C	n-h	N1	N2	N3	N4	N5	H	Weight (kg)	ACTUATOR		Sizing code
15 A	13	140	63	95	70	4-15	122	60	145	60	102	215	4.8	AE1-120	AE2-120	0
20 A	19	152	70	100	75	4-15	122	60	145	60	102	219	5.5	AE1-120	AE2-120	0
25 A	25	165	71	125	90	4-19	122	60	145	60	102	229	7.2	AE1-120	AE2-120	0
													7.8	AE1-360	AE2-360	2
32 A	38	190	76.5	135	100	4-19	122	60	145	60	102	248	11	AE1-360	AE2-360	0
40 A	38	190	76.5	140	105	4-19	122	60	145	60	102	248	11	AE1-360	AE2-360	0
50 A	51	216	86	155	120	8-19	122	60	145	60	102	256	14	AE1-360	AE2-360	0
													14	AE1-700	AE2-700	2
65 A	64	241	103	175	140	8-19	122	60	145	60	102	300	21	AE1-700	AE2-700	0
							160	97	175	63	115	395	27	AE1-02K	AE2-02K	2
80 A	76	283	124	200	160	8-23	122	60	145	60	102	310	27	AE1-700	AE2-700	1
							160	97	175	63	115	405	33	AE1-02K	AE2-02K	0
100 A	102	305	135	225	185	8-23	160	97	175	63	115	441	49	AE1-02K	AE2-02K	0
							160	97	175	63	115	473	77	AE1-02K	AE2-02K	1
125 A	127	381	158	270	225	8-25	195	75	220	75	130	485	82	AE1-06K	AE2-06K	0
							195	75	220	75	130	505	105	AE1-06K	AE2-06K	0



AE*BF*03TTT-125
AE*BF*03TTT-150

NOTE

Attachment

• Cable gland(nylon), G1/2, for φ6~12 cable

• Plug

No	DESCRIPTION	MATERIALS	REQ'D	REMARKS
9	Actuator		1	
8	Joint	SCS13A	1	
7	Joint	SUSXM7/LAK52	1	125A(Sizing code 0) 150A
		S45C		125A(Sizing code 1)
		SUS304		100A
		SUS(LAK52)/ SUS304		065,080A
6	Bracket	SUS(LAK52)	1	015~050A
		SS400		125~150A
		SCPH2		100A
		SCPH2/SUS304		065,080A
5	Packing	SCS13A	1	015~050A
		N-PTFE		
4	Stem	SUS304	1	
3	Seat	N-PTFE	2	
2	Ball	SUS304/SCS13A	1	
1	Body	SCS13A	1	

MARK	DATE	BY	DATE	SCALE	TITLE	MODEL	DWG No.
			'23-11-16	NON	J20K Flanged-end BF type electric actuated ball valve	AE1BF**3TTT AE2BF**3TTT	BF-*3TTT-AE10-EN
REVISIONS							
MV-3039							



NIPPON VALVE CONTROLS, INC.