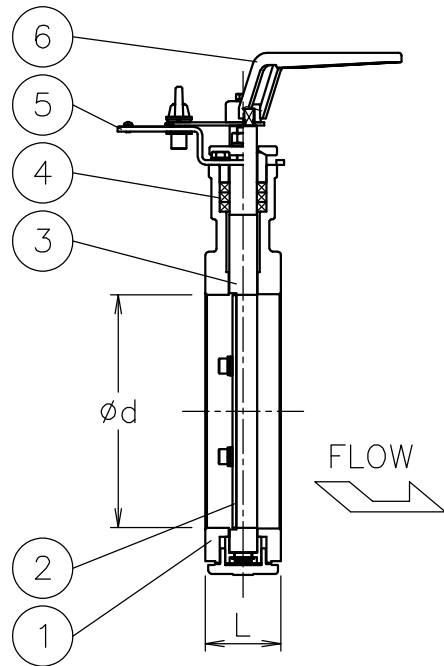
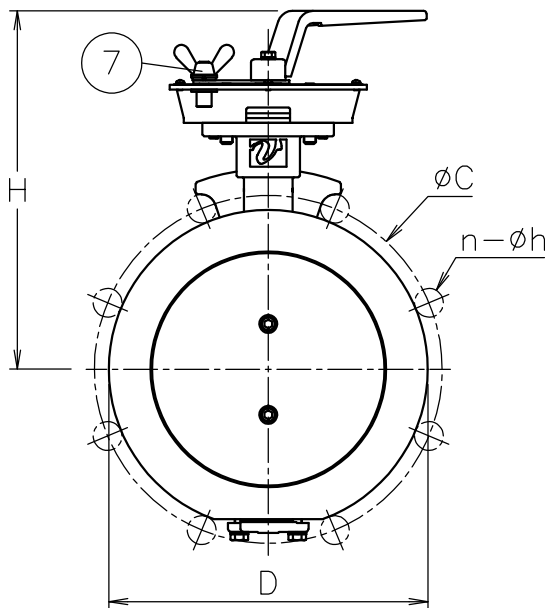
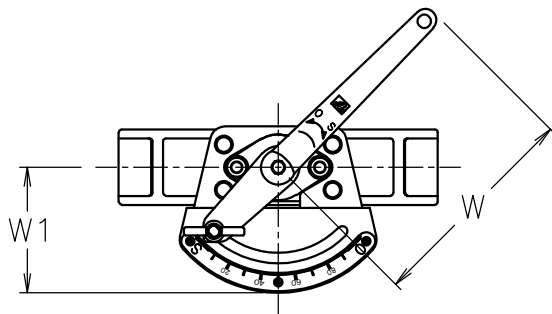



Valve DN	d	L	D	C	n-h	W	W1	H	Weight (kg)	Cv	Actuator
40 A	40	40	80	95	4-15	115	83	145	1.3	85	Lever
50 A	50	40	90	105	4-15	115	83	150	1.4	145	Lever
65 A	65	40	115	130	4-15	115	83	162	1.8	290	Lever
80 A	80	50	126	145	4-19	115	83	185	2.8	450	Lever
100 A	105	50	146	165	8-19	115	83	196	3	780	Lever
125 A	130	50	181	200	8-19	115	83	213	3.8	1200	Lever
150 A	154	50	211	230	8-19	145	83	237	5.4	1800	Lever
200 A	204	50	257	280	8-23	145	83	260	6.9	3200	Lever
250 A	253	50	322	345	12-23	145	83	282	10	5100	Lever
300 A	300	55	367	390	12-23	220	83	315	14	7200	Lever
350 A	340	70	410	435	12-25	320	136	372	23	8900	Lever
400 A	387	70	470	495	16-25	320	136	396	27	11000	Lever



NOTE

- (a) Lever handle is removed and shipped.
- (b) 080A~300A: Butterfly nut
350A~400A: Eye nut

7	Lock nut	SUS304	1	(b)
6	Lever handle	SCS13A	1	(a)
5	Position indicator	SUS304	1	
4	Gland Packing	Graphite	1	
3	Stem	SUS420J2	1	
2	Disk	SUS420J2/J1	1	
1	Body	SCS13A	1	
No	DESCRIPTION	MATERIALS	REQ'D	REMARKS

			APPR'D	H.F	TITLE	J10K Flanged-end(wafer type) Valve DN: 40~400 A WT type butterfly damper					
			CHK'D	K.Y							
			DESIGN		MODEL	MA-WTL-2TG0					
			DRAWN	P.O							
MARK	DATE	BY	DATE	'16-04-01	SCALE	NON	DWG No.	WT-2TG0-L-MA7-EN			
REVISIONS			 NIPPON VALVE CONTROLS, INC.								
MV-2506											