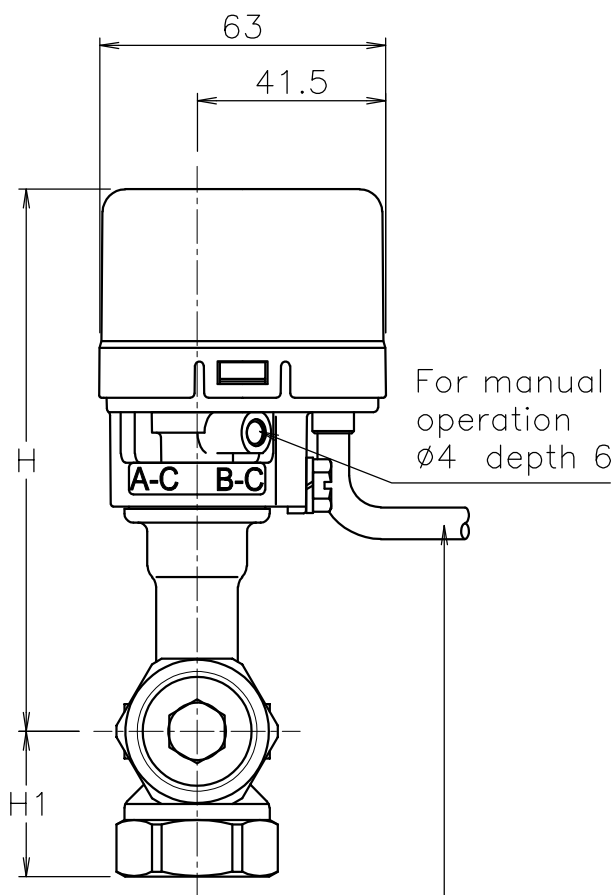
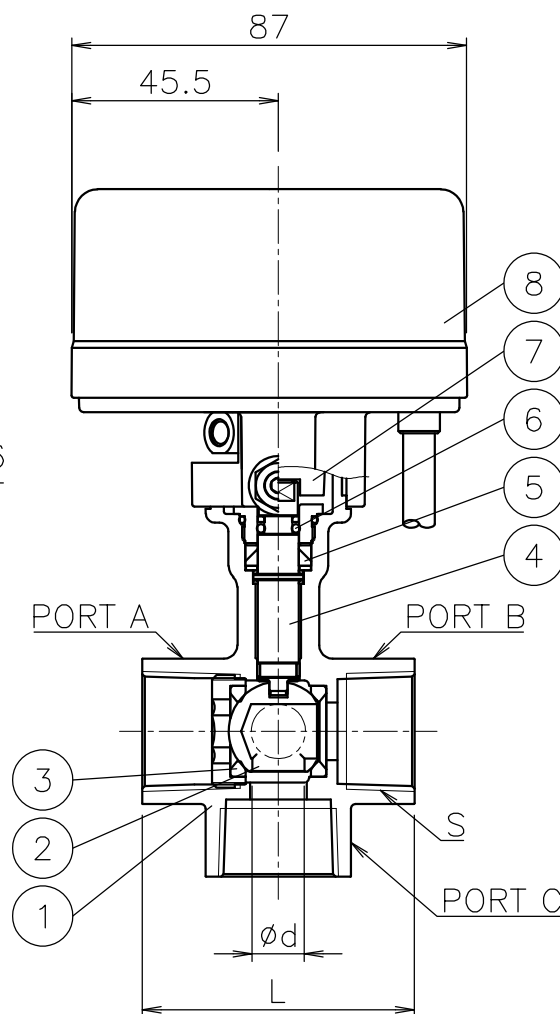


Valve DN	S	d	L	H1	H	Weight (kg)	Cv ON/OFF	Actuator	Sizing code
15 A	Rc 1/2	8.5	58.2	29	118	0.7	3	CA1-015	0
20 A	Rc 3/4	11.5	60	32	120	0.8	6	CA1-015	0

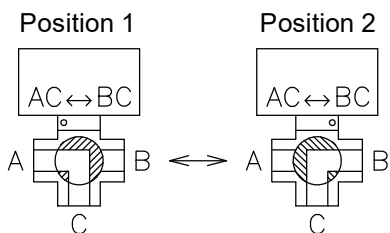


Flexible cable
 5 leads 0.5mm² Length 500mm



NOTE

Flow paths



8	Actuator	PC Case	1	
7	Joint	PPS	1	
6	O-ring	FKM	1	
5	Packing	PTFE	1	
4	Stem	SUS304	1	
3	Seat	R-PTFE	2	
2	Ball	SUS304	1	
1	Body	SCS13A	1	

No	DESCRIPTION	MATERIALS	REQ'D	REMARKS
	TITLE	Threaded End Rc Valve DN: 15~20 A TE type motorized 3 way ball valve		
	MODEL	CA1TE*05TTP		
MARK	DATE	BY	DATE	'16-04-08
SCALE	NON	DWG No.	TE-05TTP-CA2a-EN	

REVISIONS

MV-2395



NIPPON VALVE CONTROLS, INC.