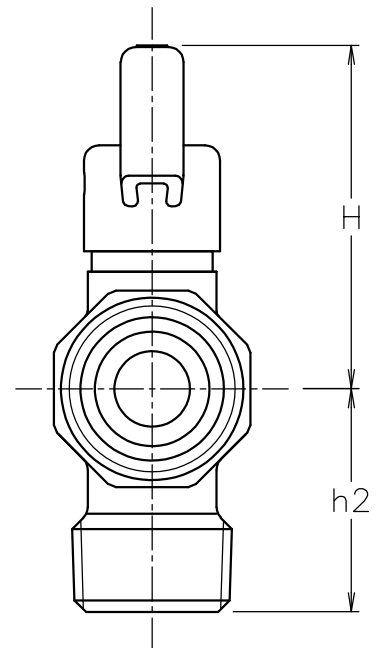
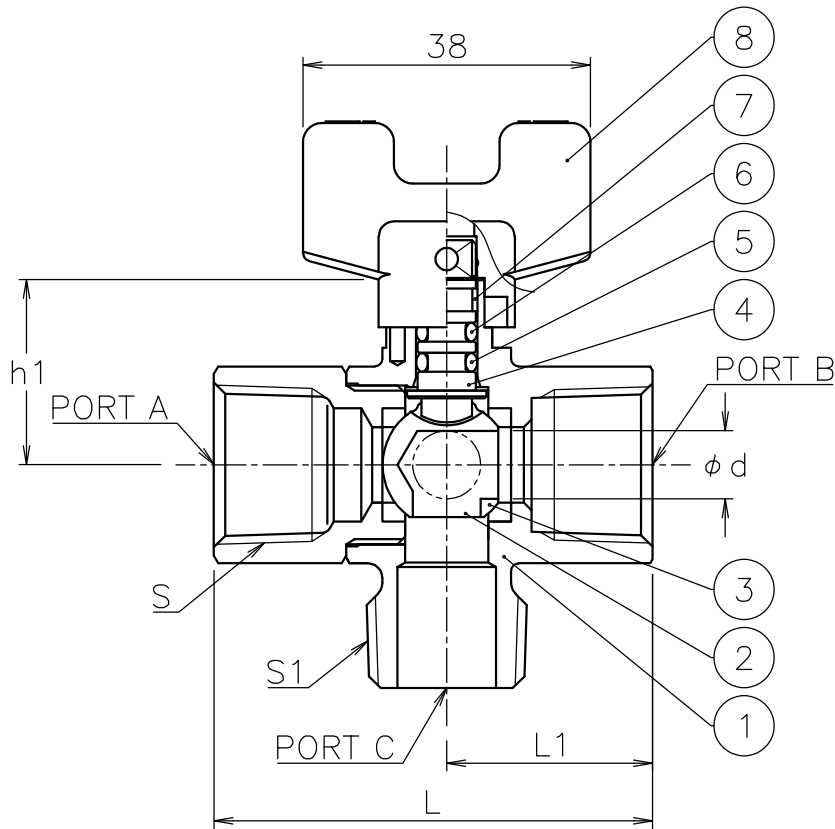
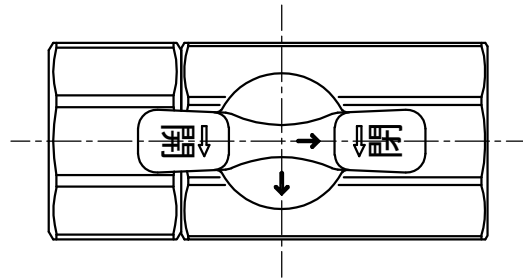
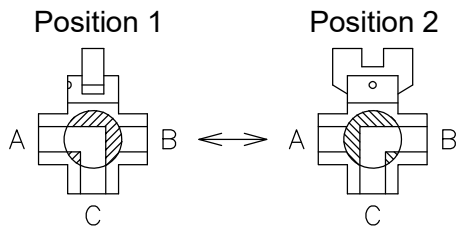


Valve DN	S	S1	d	L	L1	h1	h2	H	Weight (kg)	Cv	Actuator
15 A	Rc 1/2	R 1/2	9	58	27.2	24	29.5	46	0.3	3	Lever
20 A	Rc 3/4	R 3/4	12	63	29.7	26	32	47	0.4	6	Lever
25 A	Rc 1	R 1	15	71	33.8	30	38	51	0.5	8	Lever



NOTE

Flow paths



8	Manual handle	POM	1	
7	Guide ring	PTFE	1	
6	O-ring	NBR	1	
5	O-ring	FKM	1	
4	Stem	Dezincification resistant brass	1	
3	Seat	F-PTFE	2	
2	Ball	C3604BD	1	PLTD
1	Body	C3771BE	1	PLTD
No	DESCRIPTION	MATERIALS	REQ'D	REMARKS

			APPR'D	H.F	TITLE	Threaded End Rc Valve DN: 15~25 A						
			CHK'D	K.Y		MODEL	T type 3 way ball valve					
			DESIGN				MACT-U-5YYF					
			DRAWN	P.O								
MARK	DATE	BY	DATE	'16-04-12	SCALE		NON	DWG No.	T-5YYF-MA1a-EN			
REVISIONS												
MV-2370												