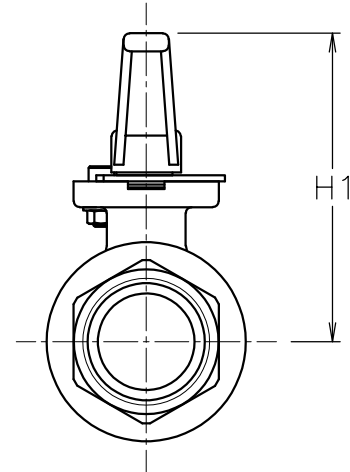
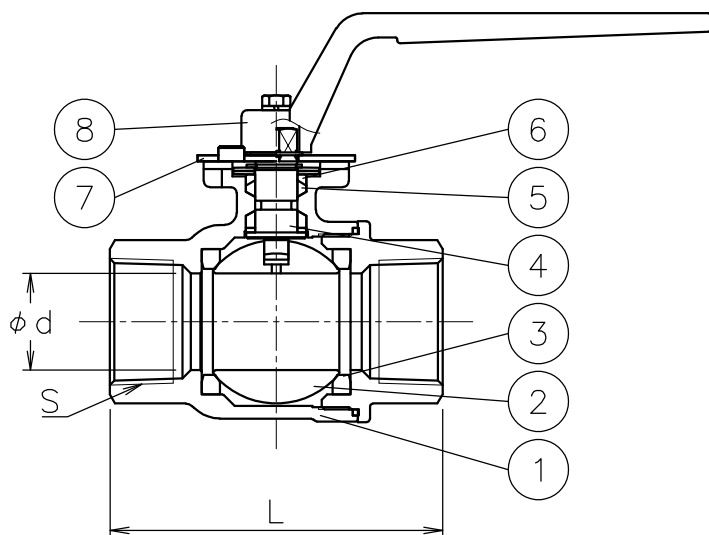
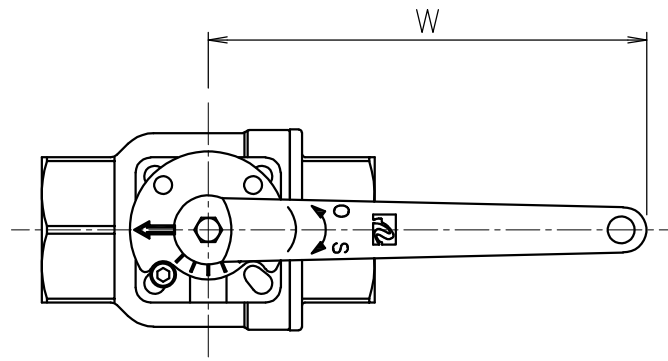



Valve DN	S	d	L	W	H1	Weight (kg)	Actuator
15 A	Rc 1/2	16	75	115	78	0.6	Lever
20 A	Rc 3/4	20	80	115	82	0.7	Lever
25 A	Rc 1	25	88	145	97	1.1	Lever
32 A	Rc1 1/4	32	110	145	102	1.6	Lever
40 A	Rc1 1/2	38	120	220	118	2.4	Lever



**NOTE**

(a) Lever handle is removed and shipped.

8	Lever handle	SCS13A	1	(a)
7	Position indicator	SUS304	1	
6	Packing	R-PTFE	1	
5	Packing	F-PTFE	1	
4	Stem	SUS316	1	
3	Seat	PTFE	2	
2	Ball	SCS14A	1	
1	Body	SCS14A	1	
No	DESCRIPTION	MATERIALS	REQ'D	REMARKS

			APPR'D	H.F	TITLE	Threaded End Rc SR type ball valve			Valve DN: 15~40 A	
			CHK'D	K.Y						
			DESIGN		MODEL	MAXSRL-5UUT				
			DRAWN	P.O						
MARK	DATE	BY	DATE	'16-04-25	SCALE	NON	DWG No.	SR-5UUT-L-MA4-EN		
REVISIONS			 <b>NIPPON VALVE CONTROLS, INC.</b>							
MV-2500										