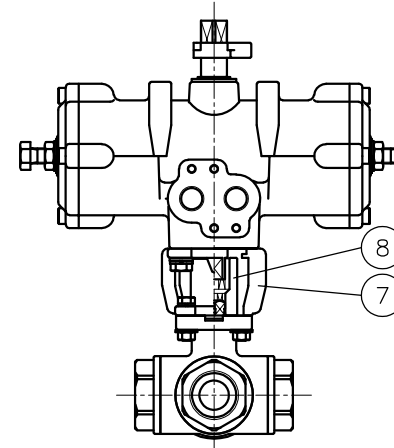
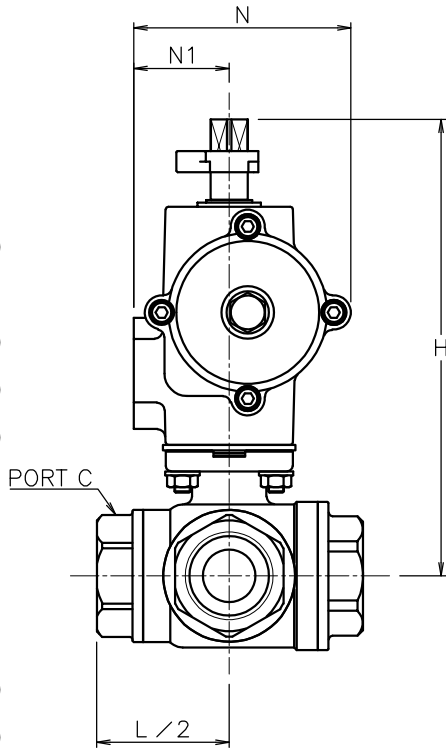
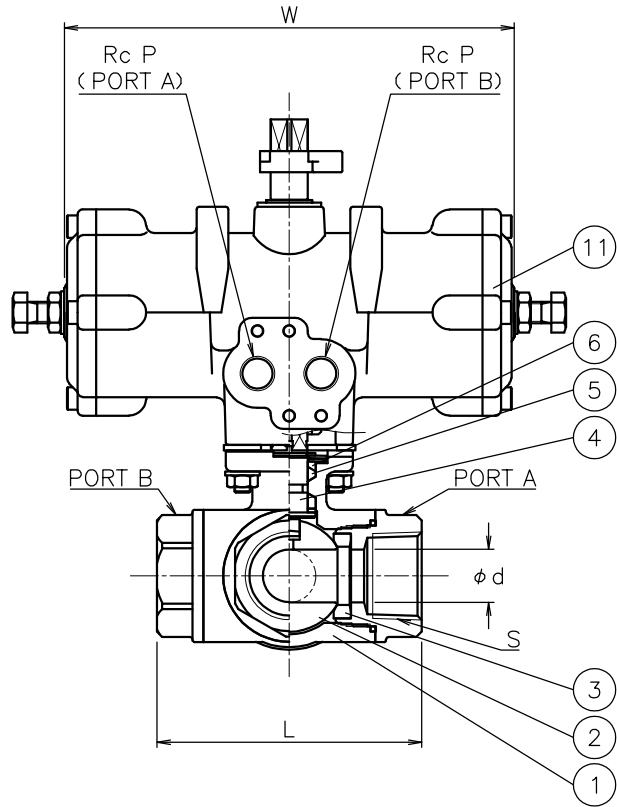
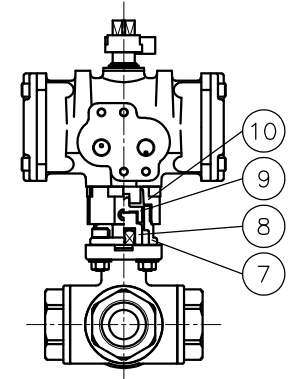


Valve DN	S	d	L	P	W	N	N1	H	Weight (kg)	Cv	Actuator	Sizing code
15 A	Rc 1/2	13	75	1/8	110	57	32	161	1.8	5	TAD-040	0
20 A	Rc 3/4	16	85	1/8	110	57	32	164	2.1	10	TAD-040	0
				1/4	170	82	36	202	2.6		TAD-050	2
25 A	Rc 1	20	100	1/4	170	82	36	173	3	16	TAD-050	0
32 A	Rc1 1/4	25	115	1/4	170	82	36	178	3.8	25	TAD-050	0
					204	95	38	227	4.8		TAD-063	2



TADSL925UUUF-020  
TADSL925UUUF-032

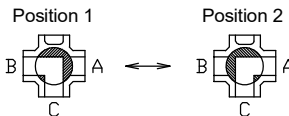


TADSL905UUUF-015  
TADSL905UUUF-020

NOTE

1. Air supply: 0.4~0.5 Mpa max 0.7 Mpa
2. Actuator operation
  - Air to port A: Position 1
  - Air to port B: Position 2

Flow paths (Top view of valve)



No	DESCRIPTION	MATERIALS	REQ'D	REMARKS
11	Actuator		1	TAD
10	Bracket	ZDC2	1	
9	Joint	SUS304	1	
8	Joint	SCS13A	1	
7	Bracket	SCS13A	1	
6	Packing	R-PTFE	1	
5	Packing	F-PTFE	1	
4	Stem	SUS316	1	
3	Seat	F-PTFE	4	
2	Ball	SCS14A	1	
1	Body	SCS14A	1	

				APPR'D	H.F						
				CHK'D	K.Y						
				DESIGN							
				DRAWN	P.O	MODEL	TADSL9*5UUUF				
MARK	DATE	BY	DATE	'16-05-27	SCALE	NON	DWG No.	SL-9*5UUUF-TA3a-EN			
REVISIONS											
MV-2500											

Valve DN: 15~32 A

TITLE Threaded End Rc (double-acting type)  
SL type pneumatic actuated 3 way ball valve