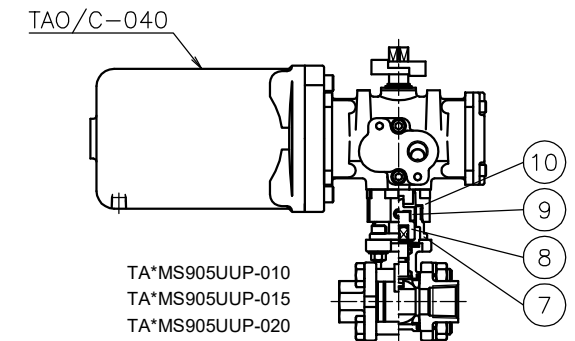
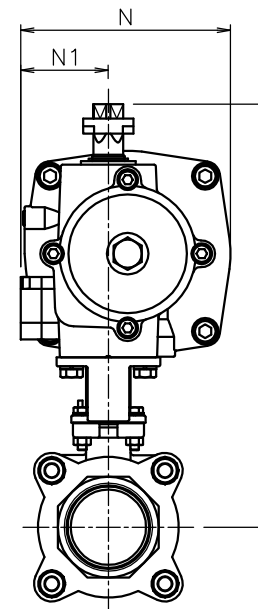
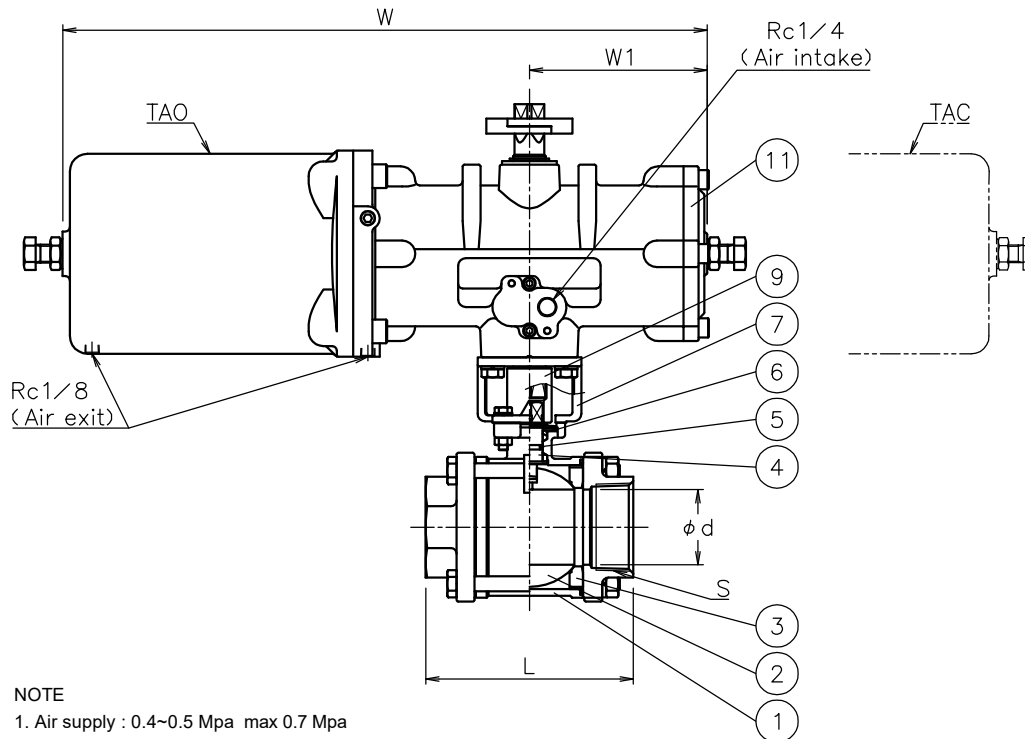
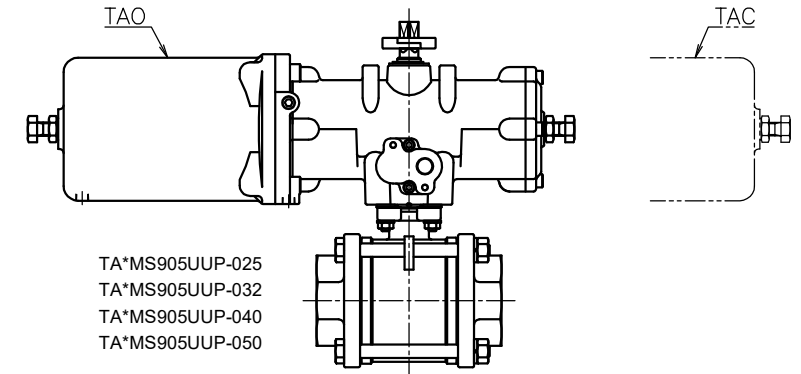


Valve DN	S	d	L	W	W1	N	N1	H	Weight (kg)	Actuator		Sizing code
10 A	Rc 3/8	13	60	249	55	92	46	160	3.1	TAO-040	TAC-040	0
				305	85	103	50	198	3.9	TAO-050	TAC-050	2
15 A	Rc 1/2	15	75	249	55	92	46	160	3.1	TAO-040	TAC-040	0
				305	85	103	50	198	3.9	TAO-050	TAC-050	2
20 A	Rc 3/4	20	80	249	55	92	46	164	3.3	TAO-040	TAC-040	0
				305	85	103	50	202	4.1	TAO-050	TAC-050	2
25 A	Rc 1	25	90	305	85	103	50	173	4.2	TAO-050	TAC-050	0
				367	102	119	52	222	6.4	TAO-063	TAC-063	2
32 A	Rc1 1/4	32	110	305	85	103	50	178	5	TAO-050	TAC-050	0
				367	102	119	52	227	7.1	TAO-063	TAC-063	2
40 A	Rc1 1/2	38	120	367	102	119	52	202	7.5	TAO-063	TAC-063	0
				435	120	142	59	277	12	TAO-080	TAC-080	2
50 A	Rc 2	50	140	367	102	119	52	211	9.1	TAO-063	TAC-063	0
				435	120	142	59	286	14	TAO-080	TAC-080	2



NOTE  
1. Air supply : 0.4~0.5 Mpa max 0.7 Mpa  
2. Actuator operation  
TAO serie · Air to intake port : OPEN  
· Spring return : SHUT  
TAC serie · Air to intake port : SHUT  
· Spring return : OPEN

※ This drawing is TAO.  
※ Only as for TAC-040,  
a cylinder direction becomes the same as TAO.

No	DESCRIPTION	MATERIALS	REQ'D	REMARKS
11	Actuator		1	TAO/C
10	Bracket	ZDC2	1	
9	Joint	SUS304	1	
8	Joint	SCS13A	1	
7	Bracket	SCS13A	1	
6	Packing	R-PTFE	1	
5	O-ring	FKM	1	
4	Stem	SUS316	1	
3	Seat	R-PTFE	2	
2	Ball	SCS14A	1	
1	Body	SCS14A	1	

MARK	DATE	BY	DATE	APP'R'D	H.F	TITLE	MODEL	SCALE	NON	DWG No.	REMARKS
			'16-06-13			Threaded End Rc (single-acting type) MS type pneumatic actuated 3 piece ball valve	TAOMS9*5UUP TACMS9*5UUP				Valve DN: 10~50 A
REVISIONS											
MV-2319											