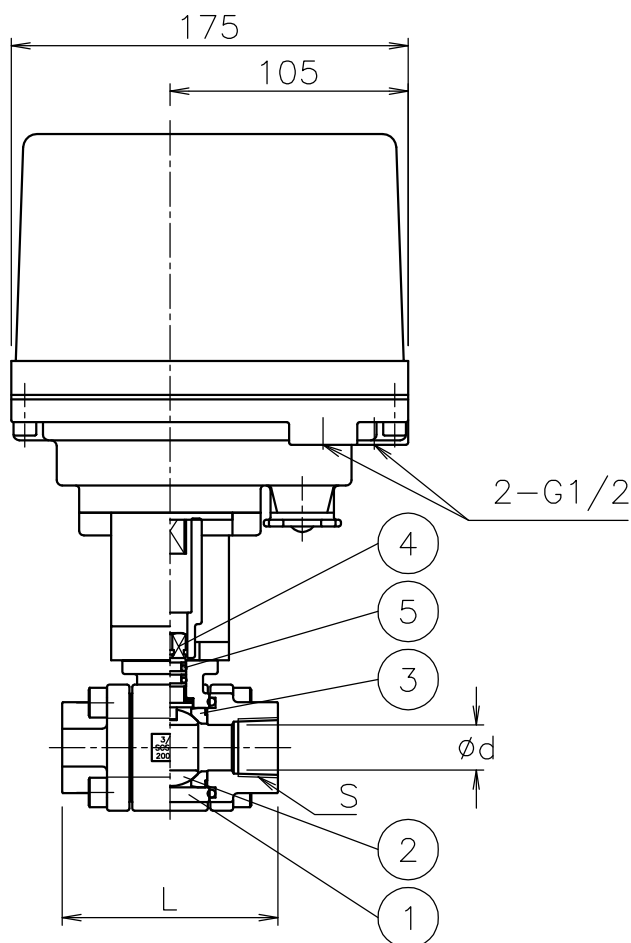
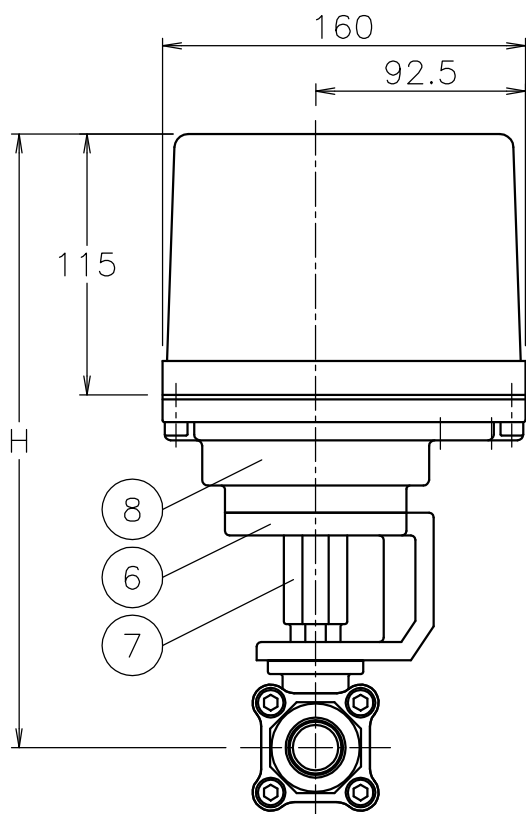


Valve DN	S	d	L	H	Weight (kg)	Actuator			Sizing code
10 A	Rc 3/8	13	72	260	6.8	HD1-300	HD2-300	HD0-300	0
15 A	Rc 1/2	15	83	266	7.1	HD1-300	HD2-300	HD0-300	0
20 A	Rc 3/4	20	95	271	7.5	HD1-300	HD2-300	HD0-300	0
					7.7	HD1-700	HD2-700	HD0-700	2
25 A	Rc 1	25	113	279	8.6	HD1-700	HD2-700	HD0-700	0
32 A	Rc1 1/4	32	124	285	9.8	HD1-700	HD2-700	HD0-700	0
				307	12	HD1-02K	HD2-02K	HD0-02K	2
40 A	Rc1 1/2	38	130	314	14	HD1-02K	HD2-02K	HD0-02K	0




NOTE

Attachment

- Cable gland (nylon), G 1/2, for $\phi 6\sim 12$ cable
- Plug

8	Actuator	Aluminum alloy die-cast cover	1	
7	Joint	SCS13A	1	
6	Bracket	SCS13A	1	
5	O-ring	FKM	2	
4	Stem	SUS316	1	
3	Seat	POM	2	
2	Ball	SCS14A	1	HCr PLTD
1	Body	SCS14A	1	
No	DESCRIPTION	MATERIALS	REQ'D	REMARKS

			APPR'D	H.F	TITLE	Threaded End Rc Valve DN: 10~40 A				
			CHK'D	K.Y		MH type high pressure electric actuated ball valve				
			DESIGN		MODEL	HD1MH**5UUD HD2MH**5UUD HD0MH0*5UUD				
			DRAWN	K.I						
MARK	DATE	BY	DATE	'07-07-12	SCALE	NON	DWG No.	MH-*5UUD-HD2-E		
REVISIONS			 NIPPON VALVE CONTROLS, INC.							
MV-										