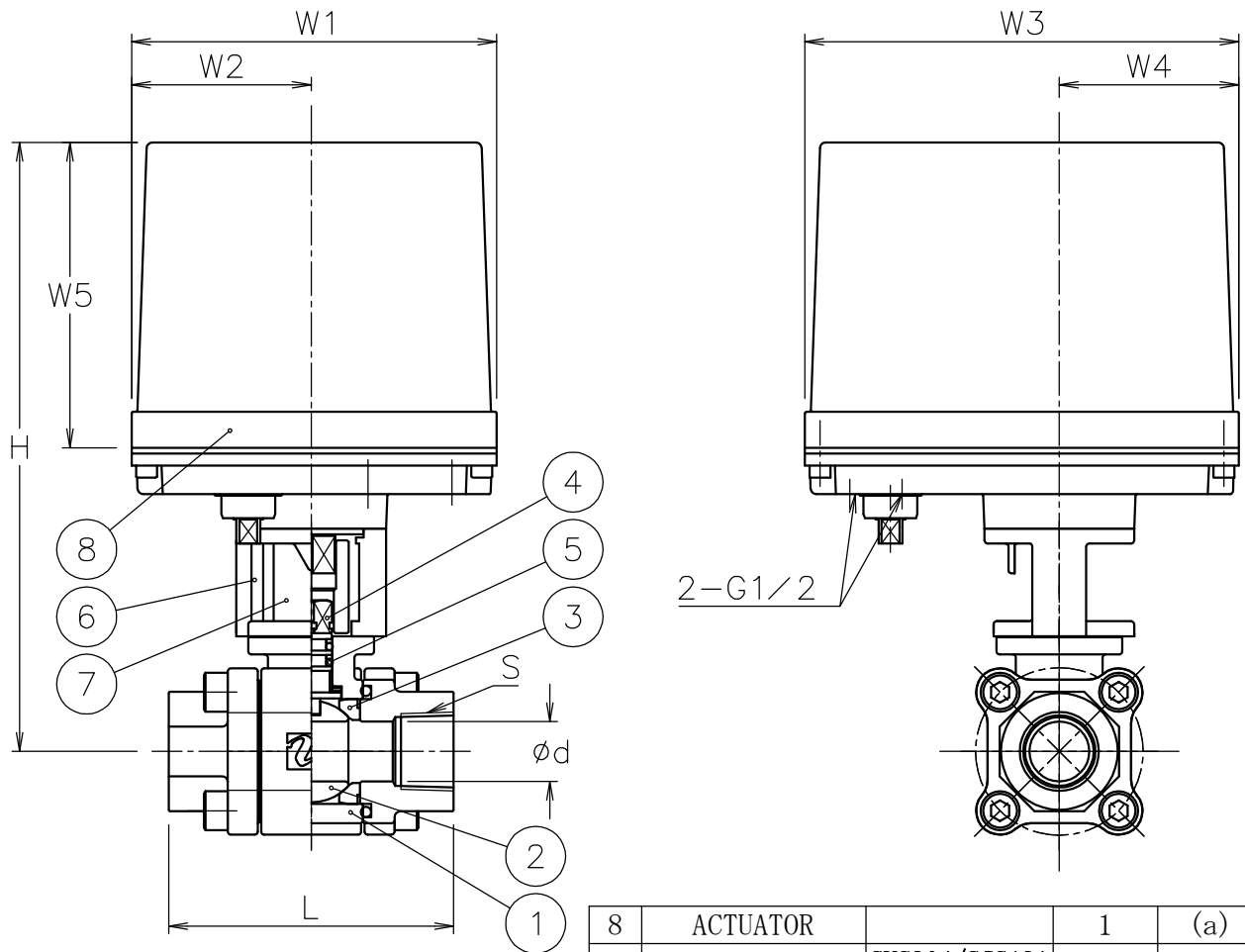


Valve DN	S	d	L	W1	W2	W3	W4	W5	H	Weight (kg)	Cv	ACTUATOR		Sizing code
10 A	Rc 3/8	13	72	122	60	145	60	102	193	3	17	AE1-120	AE2-120	0
										3.6		AE1-360	AE2-360	2
15 A	Rc 1/2	15	83	122	60	145	60	102	199	3.4	20	AE1-120	AE2-120	1
										4		AE1-360	AE2-360	0
20 A	Rc 3/4	20	95	122	60	145	60	102	204	45	45	AE1-360	AE2-360	0
									220			4.4	AE1-700	AE2-700
25 A	Rc 1	25	113	122	60	145	60	102	212	90	90	AE1-360	AE2-360	1
									228			5.2	AE1-700	AE2-700
32 A	Rc1 1/4	32	124	122	60	145	60	102	234	160	160	AE1-700	AE2-700	0
				160								97	175	63
40 A	Rc1 1/2	38	130	160	97	175	63	115	307	13.5	240	AE1-02K	AE2-02K	0




NOTE
(a) ALUMINUM ALLOY DIECAST COVER

Attachment

- Cable gland (nylon), G 1/2, for $\phi 6\sim 12$ cable
- Plug

8	ACTUATOR		1	(a)
7	JOINT	SUS304/SCS13A	1	
6	BRACKET	SCS13A	1	
5	O' RING	FKM	2	
4	STEM	SUS316	1	
3	SEAT	POM	2	
2	BALL	SCS14A	1	HCr
1	BODY	SCS14A	1	
No	DESCRIPTION	MATERIALS	REQ' D	REMARKS

			APPR' D	H. F	TITLE	Threaded End Rc ValveDN: 10~40 A				
			CHK' D	K. Y		MH type high pressure electric actuated ball valve				
			DESIGN		MODEL	AE1MH-**5UUD AE2MH-**5UUD				
			DRAWN	H. G						
			DATE	'07-09-03	SCALE	NON	DWG No.	MH-5UUD-AE2-E		
MARK	DATE	BY				NIPPON VALVE CONTROLS, INC.				
REVISIONS										