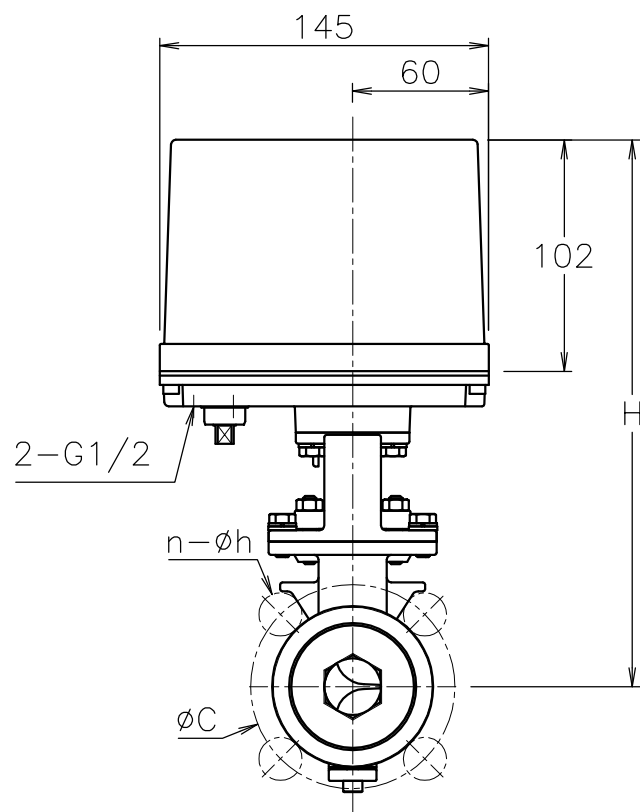
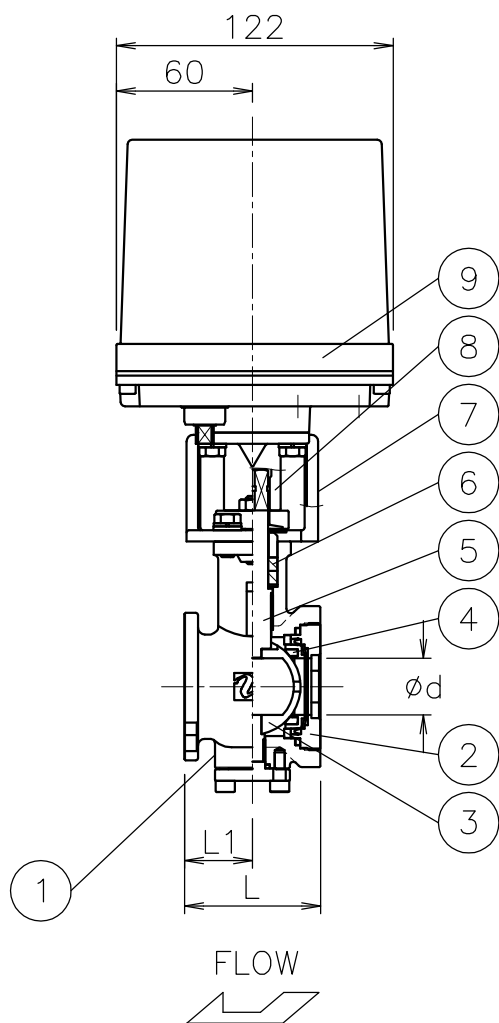


Size [mm]	d	L	L1	J10K		J20K		H	Weight [kg]	Cv	Actuator	Sizing code
				C	n-h	C	n-h					
V15	(15)	40	20	70	4-15	70	4-15	230	3.2	4	PEX-120	0
V20	(20)	50	25	75	4-15	75	4-15	232	3.4	8	PEX-120	0
V25	(25)	60	30	90	4-19	90	4-19	241	3.9	9	PEX-120	0
											PEX-300	2
V32	(32)	70	35	100	4-19	100	4-19	245	4.3	22	PEX-300	0



NOTE

Actuator material: Aluminum alloy diecast cover.

ATTACHMENT

Cable gland (nylon), G 1/2, for 6φ to 12φ cable.
Plug.

9	Actuator		1	
8	Joint	SUS304	1	
7	Bracket	SCS13A	1	
6	Packing	R-PTFE	2	
5	Stem	SUS316	1	
4	Seat	R-PTFE	1	
3	Ball	SCS14A	1	HCr PLTD
2	Cap	SCS14A	1	
1	Body	SCS14A	1	
No	DESCRIPTION	MATERIALS	REQ'D	REMARKS

			APPR'D	H.F	TITLE	J10K/20K Flanged-end (Wafer type) GS type electric actuated control valve						
			CHK'D	K.Y								
			DESIGN		MODEL	PEXGS**3UUGV						
			DRAWN	S.O								
MARK	DATE	BY	DATE	'17-03-16	SCALE	NON	DWG No.	GS-*3UUG-V-PE1-EN				
REVISIONS			 NIPPON VALVE CONTROLS, INC.									
MV-2590												