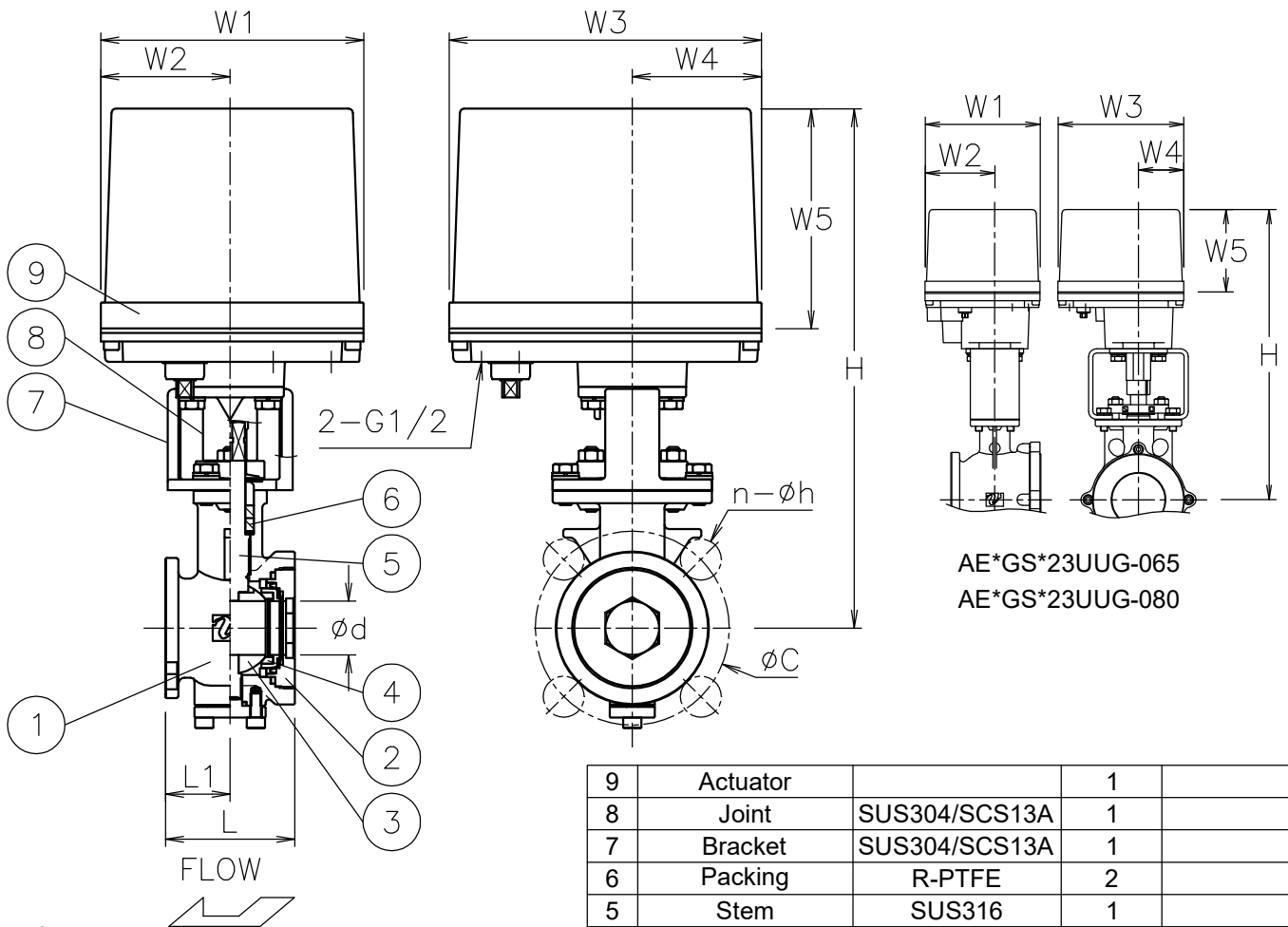


Size [mm]	d	L	L1	J10K		J20K		W1	W2	W3	W4	W5	H	Weight [kg]	Cv	Actuator		Sizing code
				C	n-h	C	n-h									AE1-120	AE2-120	
15	15	40	20	70	4-15	70	4-15	122	60	145	60	102	230	3.3	20	AE1-120	AE2-120	0
														3.9		AE1-360	AE2-360	2
20	20	50	25	75	4-15	75	4-15	122	60	145	60	102	232	3.5	36	AE1-120	AE2-120	0
														4.1		AE1-360	AE2-360	2
25	25	60	30	90	4-19	90	4-19	122	60	145	60	102	241	4	50	AE1-120	AE2-120	0
														4.6		AE1-360	AE2-360	2
32	32	70	35	100	4-19	100	4-19	122	60	145	60	102	245	4.4	90	AE1-120	AE2-120	0
														5		AE1-360	AE2-360	2
40	40	80	40	105	4-19	105	4-19	122	60	145	60	102	268	120	6	AE1-360	AE2-360	0
													284		6.1	AE1-700	AE2-700	2
50	50	95	45	120	4-19	120	8-19	122	60	145	60	102	276	220	7.4	AE1-360	AE2-360	0
													292		7.5	AE1-700	AE2-700	2
65	64	110	52	140	4-19	140	8-19	122	60	145	60	102	326	380	11	AE1-700	AE2-700	0
								160	97	175	63	115	397		17	AE1-02K	AE2-02K	2
80	74	125	61	150	8-19	160	8-23	122	60	145	60	102	333	750	13	AE1-700	AE2-700	0
								160	97	175	63	115	404		19	AE1-02K	AE2-02K	2



AE*GS*23UUG-065
AE*GS*23UUG-080

NOTE

Actuator material: Aluminum alloy diecast cover.

ATTACHMENT

Cable gland (nylon), G1/2, for 6φ to 12φ cable.
Plug.

9	Actuator		1	
8	Joint	SUS304/SCS13A	1	
7	Bracket	SUS304/SCS13A	1	
6	Packing	R-PTFE	2	
5	Stem	SUS316	1	
4	Seat	R-PTFE	1	
3	Ball	SCS14A	1	HCr PLTD
2	Cap	SCS14A	1	
1	Body	SCS14A	1	
No	DESCRIPTION	MATERIALS	REQ'D	REMARKS

			APPR'D	H.F	TITLE	J10K/20K Flanged-end (Wafer type) GS type electric actuated ball valve				
			CHK'D	K.Y						
			DESIGN		MODEL	AE1GS**3UUG AE2GS**3UUG				
			DRAWN	S.O						
MARK	DATE	BY	DATE	'19-07-23	SCALE	NON	DWG No.	GS-*3UUG-AE14-EN		
REVISIONS										
MV-2789										



NIPPON VALVE CONTROLS, INC.