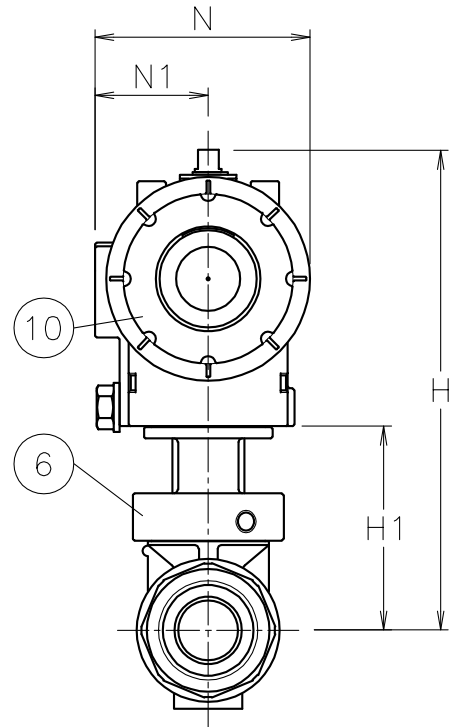
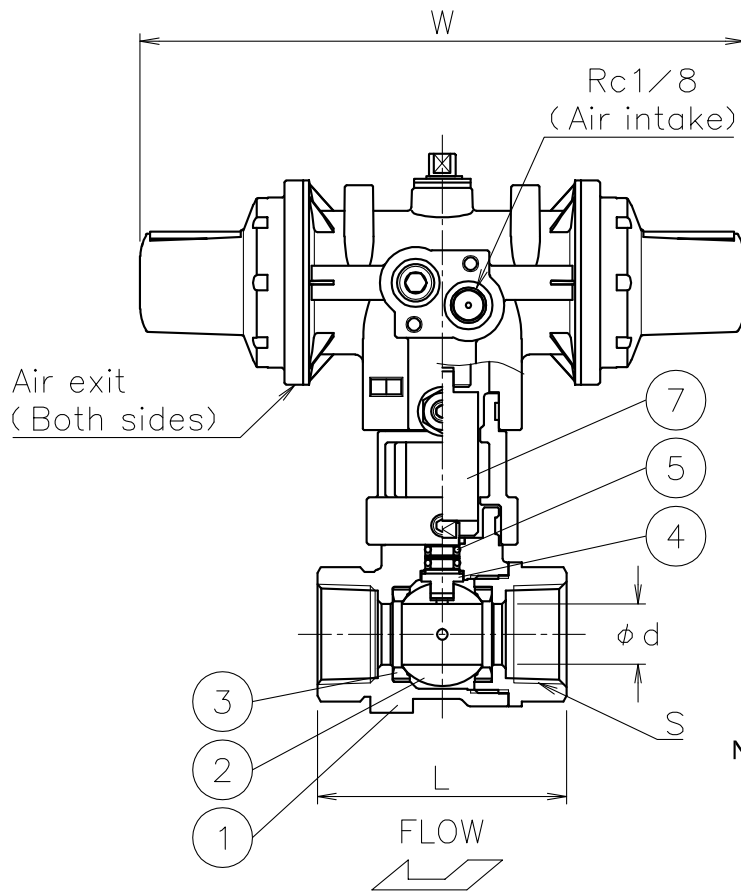


Size (mm)	S	d	L	W	N	N1	H1	H	Weight (kg)	Cv	Acuator		Sizing code
15	Rc 1/2	13	59	160	57	30	52	125	0.8	9	PSO-03D	PSC-03D	0
20	Rc 3/4	16	66	160	57	30	54	127	0.9	13	PSO-03D	PSC-03D	0
25	Rc 1	20	78	185	68	36	61	150	1.4	24	PSO-04D	PSC-04D	0
32	Rc1 1/4	25	87	185	68	36	71	161	1.7	44	PSO-04D	PSC-04D	0
40	Rc1 1/2	32	95	247	82	44	77	207	2.9	80	PSO-05D	PSC-05D	0
50	Rc 2	39	109	247	82	44	83	213	3.5	120	PSO-05D	PSC-05D	0

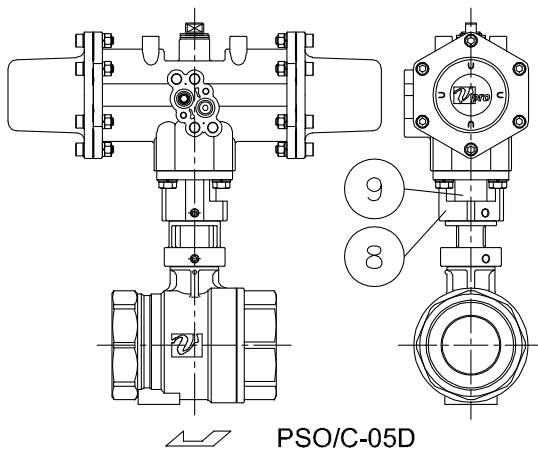


NOTE

1. Air supply : 0.4~0.5 Mpa max 0.7 Mpa
2. Actuator operation

PSO	Air to intake port : OPEN
	Spring return : SHUT
PSC	Air to intake port : SHUT
	Spring return : OPEN

3. Coupling OD must be less than $\phi 14.5$



10	Actuator	PPS body	1	PSO/C
9	Joint	SUS304/ZDC2	1	
8	Bracket	ZDC2	1	
7	Joint	SUS303	1	
6	Bracket	SCS13A	1	
5	O-ring	Steam resistant FKM	2	
4	Stem	SUS316	1	Cr plated
3	Seat	R-PTFE	2	
2	Ball	SCS14A	1	
1	Body	SCS14A	1	
No	DESCRIPTION	MATERIALS	REQ'D	REMARKS

			APPR'D	K.Y	TITLE	Threaded End Rc (single-acting type) EG type pneumatic actuated ball valve			
			CHK'D	K.Y					
			DESIGN		MODEL	PSOEG905UUP PSCEG905UUP			
			DRAWN	T.A					
MARK	DATE	BY	DATE	'22-12-07	SCALE	NON	DWG No.	EG-905UUP-DA1-EN	
REVISIONS									
MV-2987									