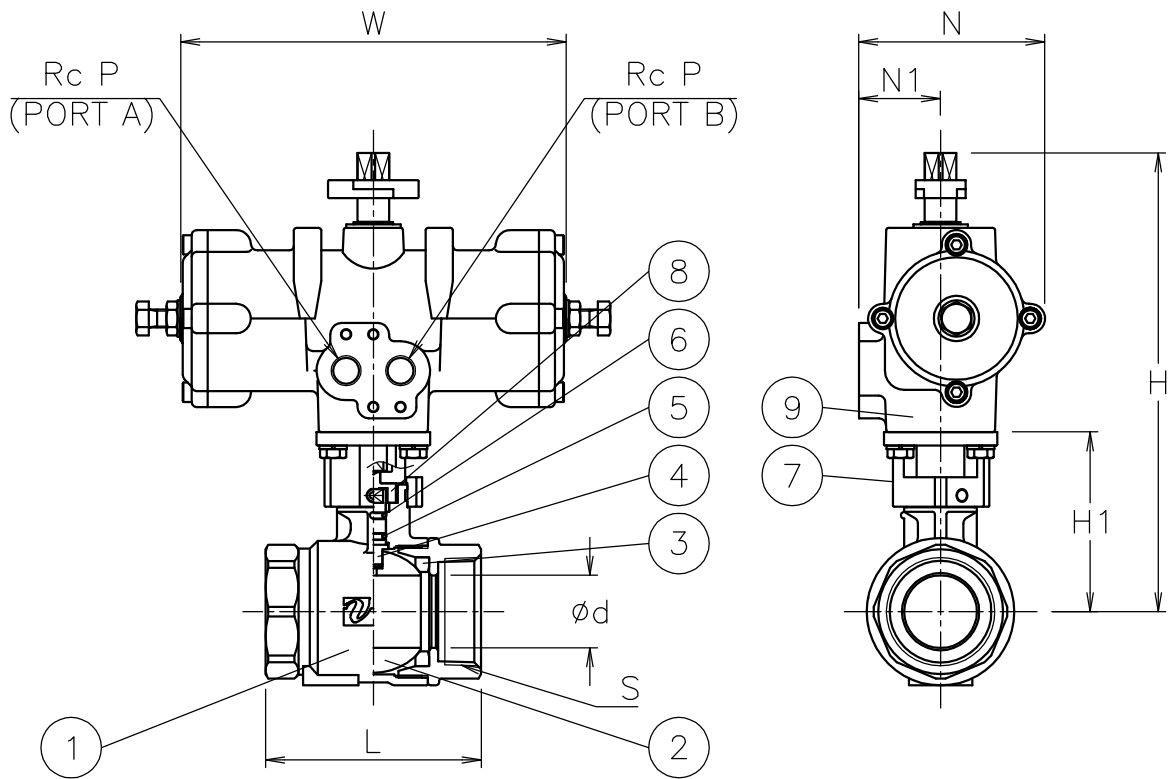



Size [mm]	S	d	L	H1	P	W	N	N1	H	Weight [kg]	Cv	Actuator	Sizing code
8	Rc 1/4	8.5	46	39	1/8	110	57	32	129	1.3	5	TAD-040	0
10	Rc 3/8	9.2	46	39	1/8	110	57	32	129	1.3	5	TAD-040	0
				52	1/4	170	82	36	175	1.9		TAD-050	2
15	Rc 1/2	13	59	42	1/8	110	57	32	131	1.4	12	TAD-040	0
				55	1/4	170	82	36	178	1.9		TAD-050	2
20	Rc 3/4	16	66	44	1/8	110	57	32	134	1.5	16	TAD-040	0
				57	1/4	170	82	36	180	2		TAD-050	2
25	Rc 1	20	78	51	1/8	110	57	32	140	1.7	28	TAD-040	0
				63	1/4	170	82	36	186	2.2		TAD-050	2
32	Rc1 1/4	25	87	61	1/8	110	57	32	151	2	47	TAD-040	0
				74	1/4	170	82	36	197	2.6		TAD-050	2
40	Rc1 1/2	32	95	80	1/4	170	82	36	203	3	83	TAD-050	0
50	Rc 2	39	109	86	1/4	170	82	36	209	3.5	123	TAD-050	0



**NOTE**

- 1) Air supply: 0.4 to 0.5 Mpa. Max 0.7 Mpa.
- 2) Actuator operation  
Air to port A: SHUT  
Air to port B: OPEN

9	Actuator		1	TAD
8	Joint	SUS304	1	
7	Bracket	ZDC2	1	
6	O-ring	NBR	1	
5	O-ring	FKM	1	
4	Stem	SUS316	1	Cr plated
3	Seat	PTFE	2	
2	Ball	SUS316/SCS14A	1	
1	Body	SCS14A	1	
No	DESCRIPTION	MATERIALS	REQ'D	REMARKS

			APPR'D	H.F	TITLE	Threaded End Rc (double-acting type) E type pneumatic actuated ball valve					
			CHK'D	K.Y							
			DESIGN		MODEL	TADE-9*5UUT					
			DRAWN	S.O							
MARK	DATE	BY	DATE	'19-05-21	SCALE	NON	DWG No.	E-9*5UUT-TA10-EN			
REVISIONS			 <b>NIPPON VALVE CONTROLS, INC.</b>								
MV-2778											