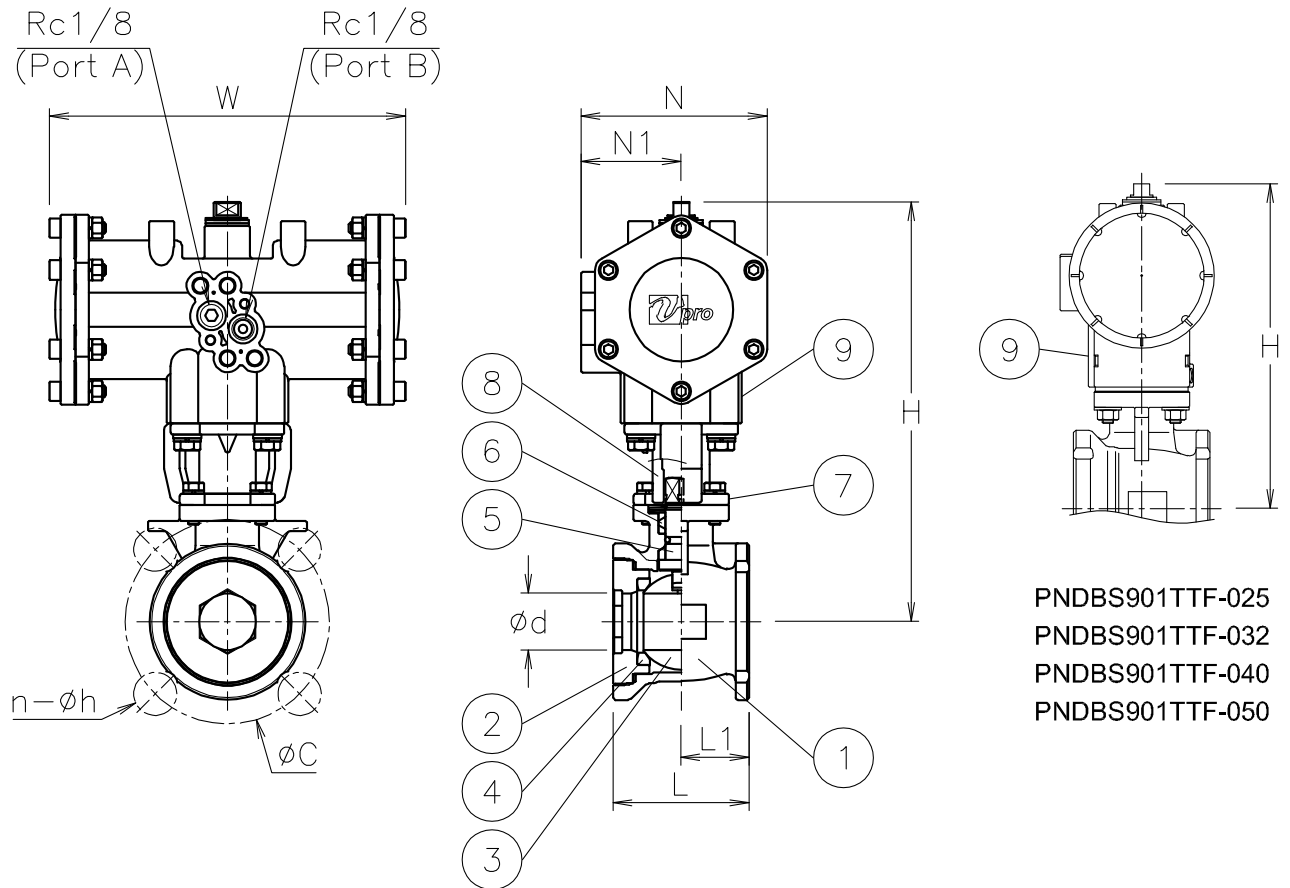


Size [mm]	d	L	L1	C	n-h	W	N	N1	H	Weight [kg]	Actuator	Sizing code
15	15	40	20	70	4-15	108	57	30	126	0.9	PND-03D	0
						128	68	36	143	1.3	PND-04D	2
20	20	50	25	75	4-15	108	57	30	129	1.1	PND-03D	0
						128	68	36	146	1.5	PND-04D	2
25	25	60	30	90	4-19	128	68	36	143	1.8	PND-04D	0
						157	82	44	185	2.6	PND-05D	2
32	32	70	35	100	4-19	128	68	36	149	2.3	PND-04D	0
						157	82	44	191	2.7	PND-05D	2
40	38	80	40	105	4-19	157	82	44	164	3.1	PND-05D	0
50	50	95	47.5	120	4-19	157	82	44	173	4.5	PND-05D	0



PNDBS901TTF-025
 PNDBS901TTF-032
 PNDBS901TTF-040
 PNDBS901TTF-050

NOTE

- 1) Air supply: 0.4 to 0.5 Mpa. Max 0.7 Mpa.
 - 2) Actuator operation
 Air to port A: SHUT
 Air to port B: OPEN
- (a) Coupling OD must be less than 14.5 mm.

9	Actuator	PPS body	1	PND (a)
8	Joint	SUS304/SCS13A	1	
7	Bracket	SCS13A	1	
6	Packing	R-PTFE	1set	
5	Stem	SUS304	1	
4	Seat	F-PTFE	2	
3	Ball	SCS13A	1	
2	Cap	SCS13A	1	
1	Body	SCS13A	1	
No	DESCRIPTION	MATERIALS	REQ'D	REMARKS

			APPR'D	K.Y	TITLE	J10K Flanged-end, Wafer (double-acting type) BS type pneumatic actuated ball valve														
			CHK'D	K.Y																
			DESIGN										MODEL	PNDBS9*1TTF						
			DRAWN	T.A																
MARK	DATE	BY	DATE	'22-12-06	SCALE	NON	DWG No.	BS-9*1TTF-NA1-EN												
REVISIONS			NIPPON VALVE CONTROLS, INC.																	
MV-2987																				