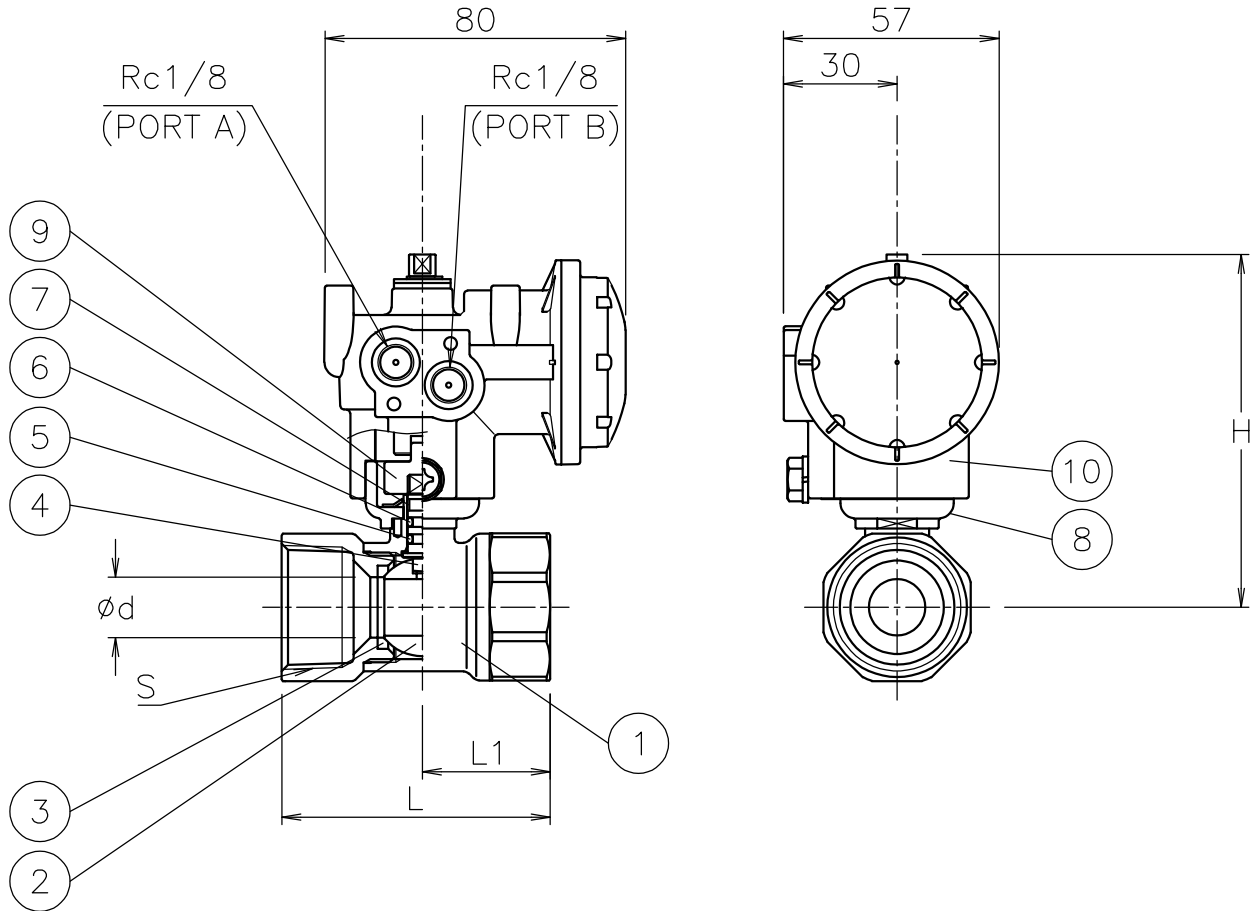



Size [mm]	S	d	L	L1	H	Weight [kg]	Cv	Actuator	Sizing code
15	Rc 1/2	10	58	27.2	88	0.5	6	PND-03S	0
20	Rc 3/4	12.5	63	29.7	90	0.6	11	PND-03S	0
25	Rc 1	15	71	33.8	94	0.7	15	PND-03S	0



NOTE

- (a) Coupling OD must be less than 14.5 mm.
 1) Air supply: 0.4 to 0.5 Mpa. Max 0.7 Mpa.
 2) Actuator operation
 Air to port A: SHUT.
 Air to port B: OPEN.

10	Actuator	PPS body	1	PND (a)
9	Joint	PPS	1	
8	Bracket	PPS	1	
7	Guide ring	PTFE	1	
6	O-ring	NBR	1	
5	O-ring	FKM	1	
4	Stem	Dezincification resistant brass	1	
3	Seat	F-PTFE	2	
2	Ball	C3604BD	1	Plated
1	Body	C3771BE	1	Plated
No	DESCRIPTION	MATERIALS	REQ'D	REMARKS

			APPR'D	H.F	TITLE	Threaded End Rc (double-acting type) A type pneumatic actuated ball valve				
			CHK'D	K.Y						
			DESIGN		MODEL	PNDA-905YYF				
			DRAWN	S.O						
MARK	DATE	BY	DATE	'23-08-16	SCALE	NON	DWG No.	A-905YYF-NA2-EN		
REVISIONS			 NIPPON VALVE CONTROLS, INC.							
MV-3026										